

38-3E Day Night Blinds Motor Operating Manual

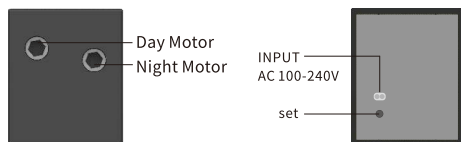
Company reserves the right to change product design and specifications without prior notice then, photos are for reference only. A/0 H12172

Product Introduction

Day Night Blinds Motor



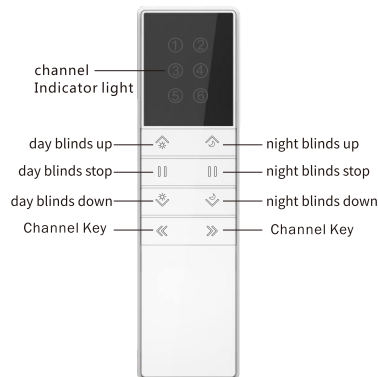
Front



Left

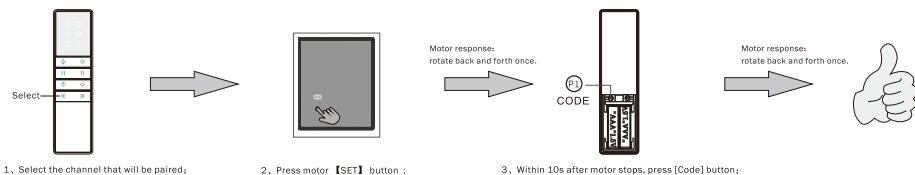
Right

Control System

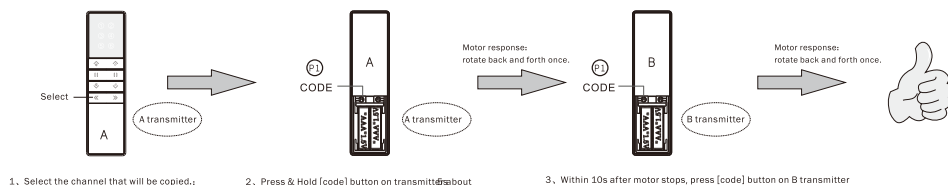


Instructions: (Take A13 button transmitter as an example, for other transmitters, please refer to the corresponding transmitter manual.)

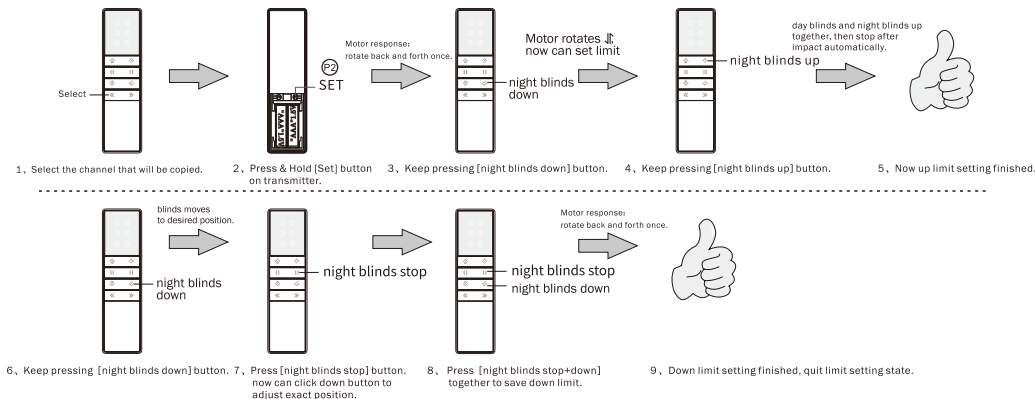
Pairing transmitter and motor repeat the pairing operation once to eliminate the current pairing. A motor stores up to 5 transmitter channels, adding a new transmitter channel will cover the earliest channel. For example, current paired channels are 1-5. If you add channel 6, paired channels will be 2-6.



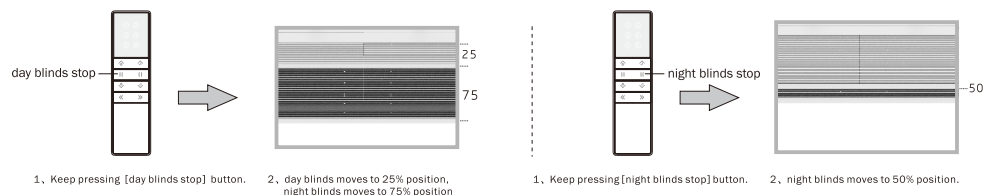
copy add a new channel to control motor. (No need to touch motor)



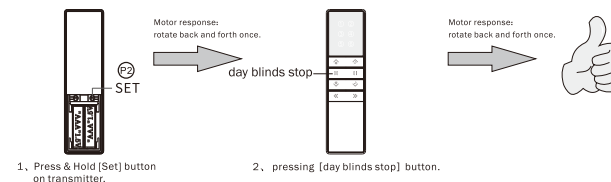
Use remote to set up and down limit ⚠ Have to set up limit firstly, then set down limit. If no actions within 30 seconds, motor will quit limit setting state.



Favorite position Firstly must finish setting up and down limit



Day and night blinds rising gap mode adjustment (flag-raising type) The default is the large gap mode. Repeated operations will switch between large gap and zero gap.



Restore factory settings Clean all paired codes from remote and all limits.

