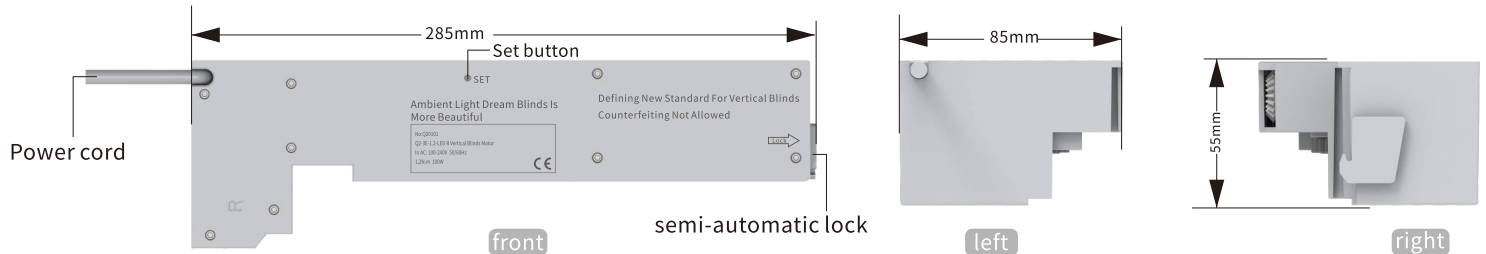


# Q2-LED-Right Dream/Vertical Blinds Motor Manual

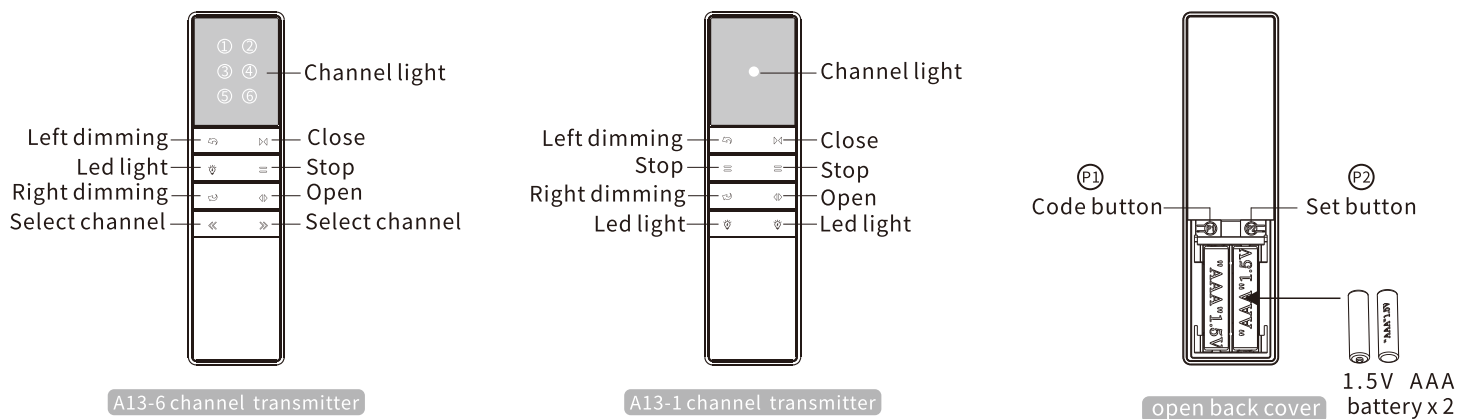
reserves the right to change the product design and manual without prior notice. The pictures are for reference only.

A/1 H12210

**Motor Introduction** Take the Q2-LED-right Dream/Vertical Blinds motor as an example to illustrate

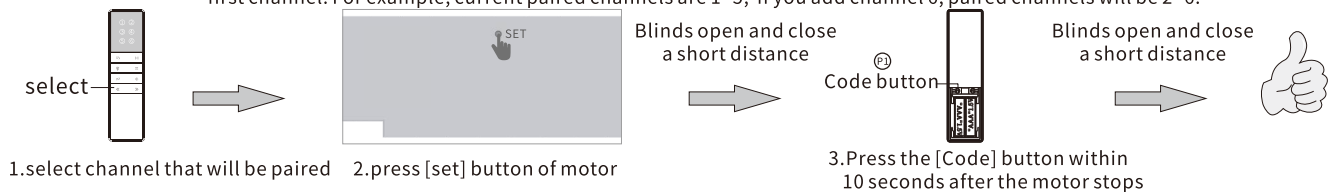


## Transmitter Introduction

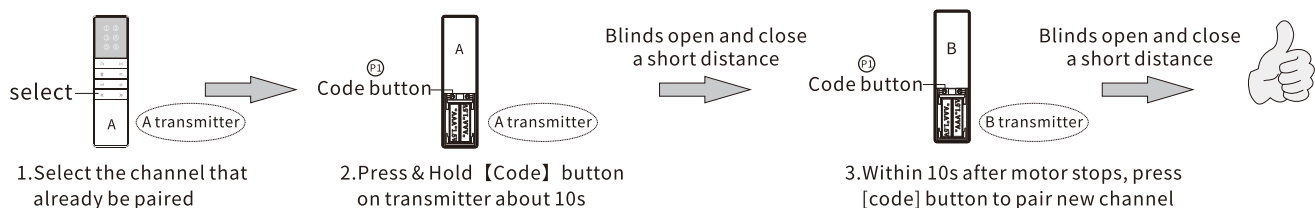


**Instructions** Take A13 button transmitter as an example for illustration, please refer to the corresponding manual for other transmitters

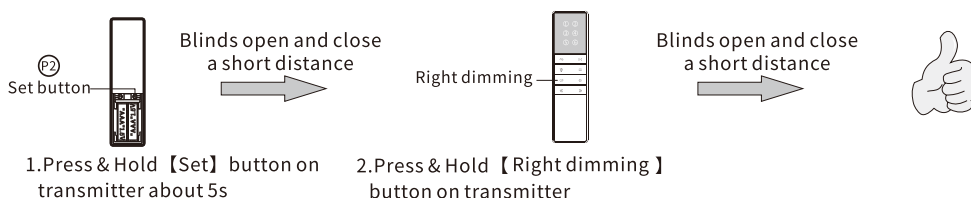
**Code pairing** Repeat the code pairing step to eliminate the current code. One motor can store up to 5 channels, adding a new channel will only cover the first channel. For example, current paired channels are 1~5, if you add channel 6, paired channels will be 2~6.



**Copy** Add a new channel to control motor. (No need to touch motor):

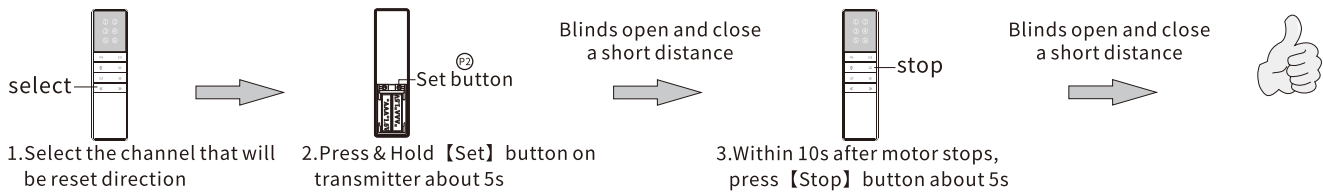


## Set the center closed move



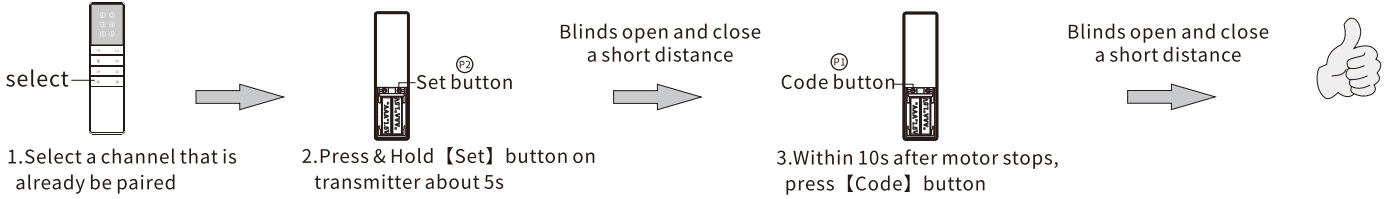
## Change direction of opening and closing

If press remote [open] button, but blinds closes. Set it. This setting will not change dimming direction.



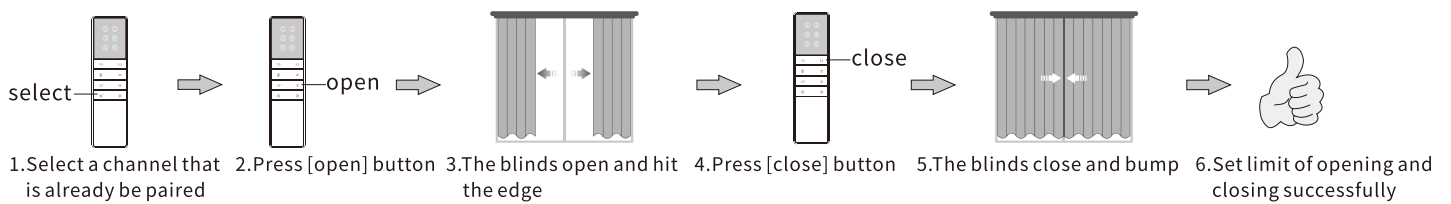
## Delete the limit of opening and closing

This setting will not change limit of dimming, but it will change max dimming 170 degree to 130 degree. The max dimming degree will be 170 after opening and closing limit setting is finished.



## Set limit of opening and closing

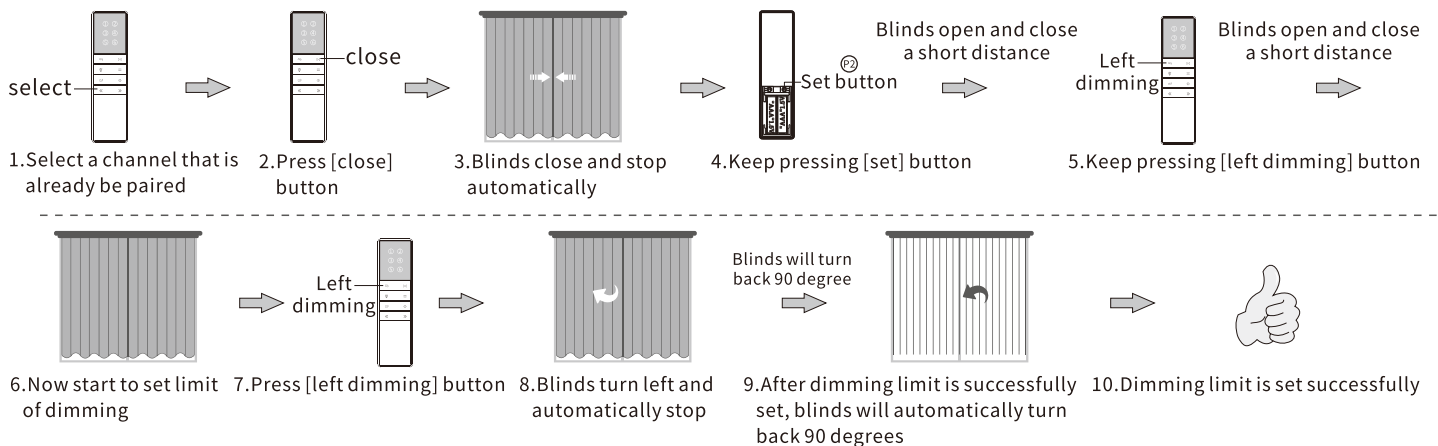
If limit of opening and closing is not suitable for current track, please do above steps to delete limit firstly, then set new limit as below steps. (limit of opening and closing is required to set limit of dimming.)



**Note:** If blinds degree is not 90 (means not perpendicular to the track) when you set limit of opening and closing, please press transmitter dimming button to adjust to 90 degree. If not, the misaligned left and right blinds maybe destroy the runners when closing

## Set limit of dimming

**Note:** When setting the dimming limit, the binds must run to the fully closed position, otherwise the dimming limit cannot be set

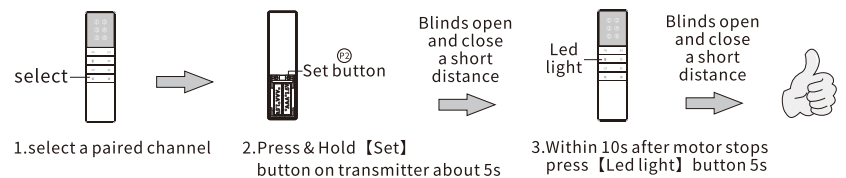


### Note:

- When press [open] or [close] button, the blinds will turn to 90 degrees (perpendicular to the track) automatically, then start to open or close. If it is not 90 degrees when opening or closing please re-set limit of dimming
- When blinds is on fully closed position, max dimming degree is 170. If on other position, max dimming degree is 130
- Motor does not have any limit at factory, so the blinds will not do this action: turn automatically and then open or close

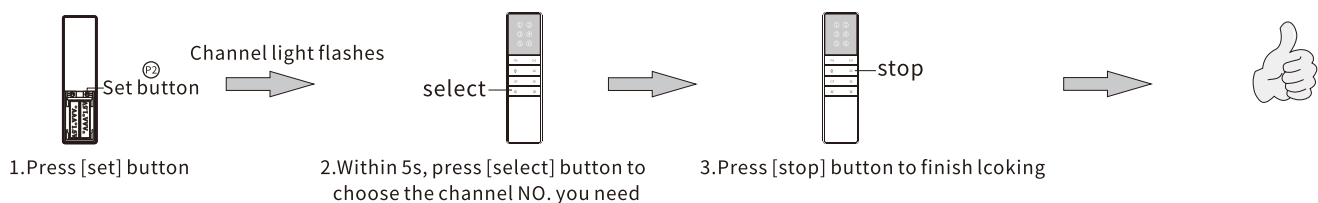
### Ambient light setting

Default: ambient light is automatically turned on when motor is running. After below setting light will not turn on when motor is running. Repeat the setting, light will turn on when motor is running. When light off, press the "On Light" button of remote to turn on the light.



## Lock transmitter channel

For example, the transmitter has 6 channels. There are only two blinds. In this case you can lock transmitter channels from 6 to 2



## Factory reset

clear all settings on the motor

