

E24 In-bulit single end venetian motor specification

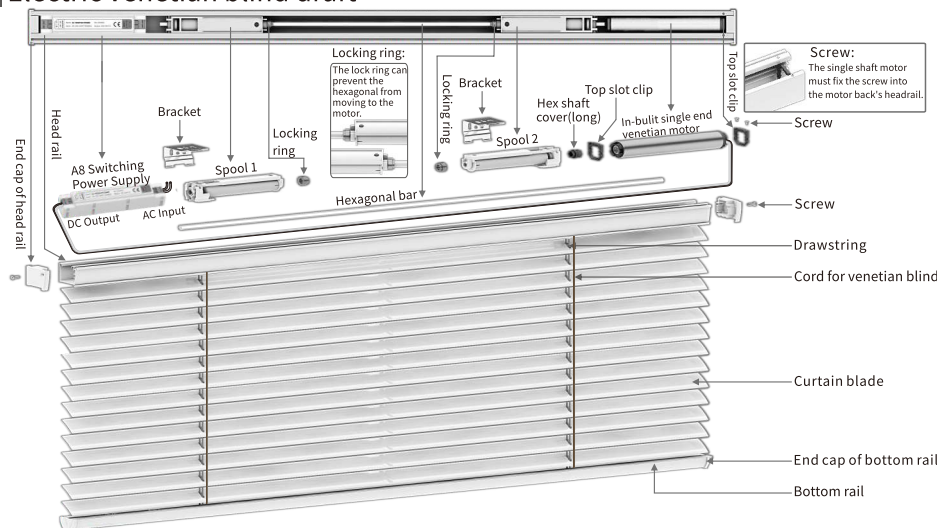
E24-EL-SA-1

E24-EL-SA-1.3

Build-in wireless control system

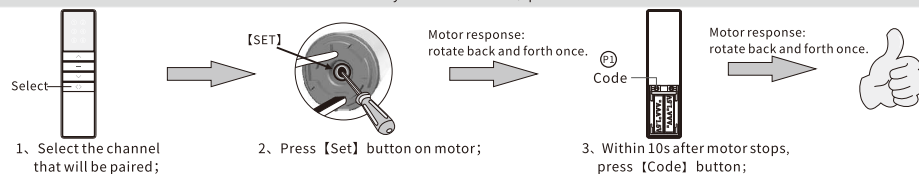
Company reserves the right to change product design and specifications without prior notice then, photos are for reference only. H12010 A/6

E Electric venetian blind draft

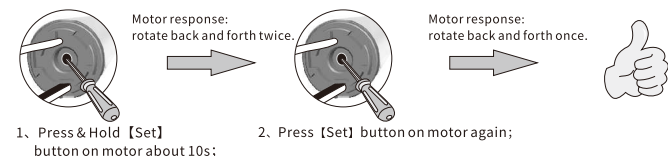


I Instructions (*Take A3 button transmitter as an example, For other transmitters, please refer to the corresponding transmitter manual.)

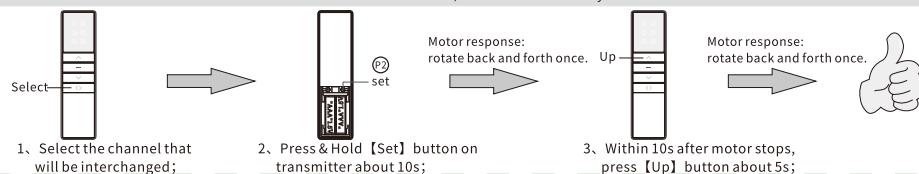
Pairing transmitter and motor: Repeat the pairing operation once to eliminate the current pairing. A motor stores up to 10 transmitter channels. Adding a new transmitter channel will cover the earliest channel. For example, current paired channels are 1-10. If you add channel 11, paired channels will be 2-11.



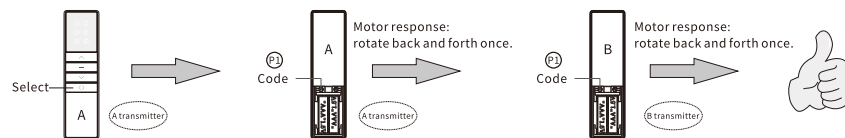
Clear pairing: Clear all pairing on the motor:



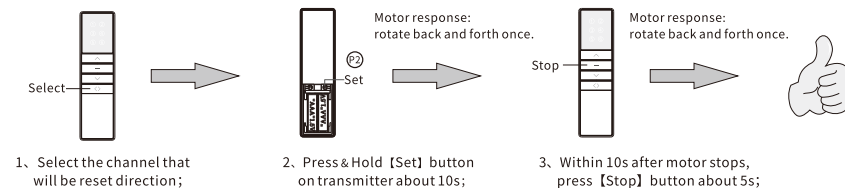
Inching / Continuous moving interchange: Default is continuous moving. After switching to inching moving, press & hold [Up] or [Down] button about 2s, motor will continuously moves:



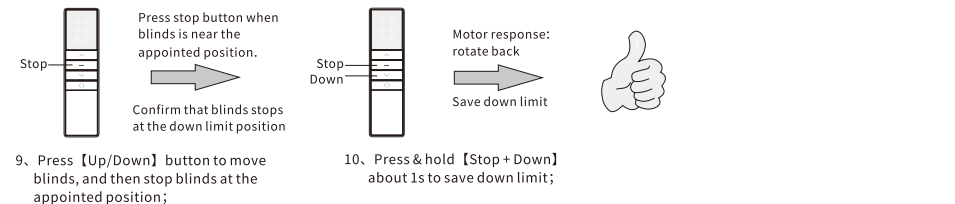
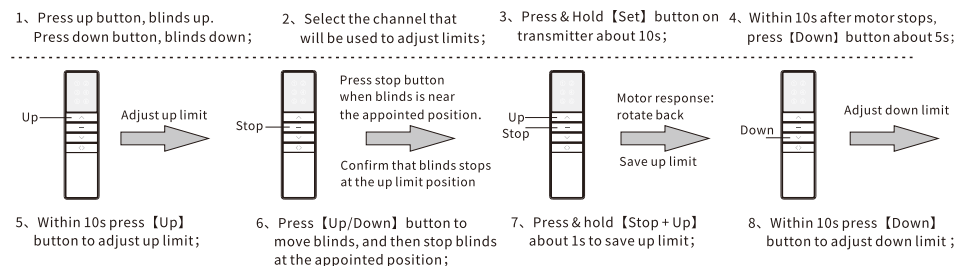
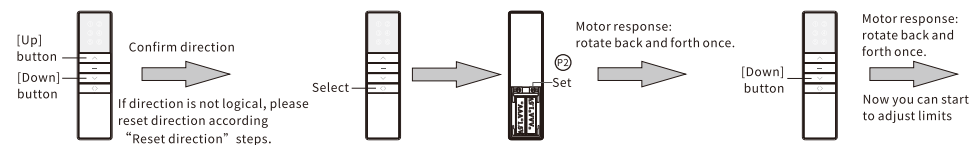
Copy: Add a new channel to control motor. (No need to touch motor):



Reset direction: Reset motor direction. Such as: before reset, press transmitter up button, blinds run down. After reset, press transmitter up button, blinds run up.



Adjusting Limits: When you press [Up] or [Down] button, the blinds will move up or down and stop automatically at the appointed position.



Speed setting: Two speed can be adjusted, Default is first:

