

E24-3E Skylight Motor II Operating Manual

Company reserves the right to change product design and specifications without prior notice then, photos are for reference only.

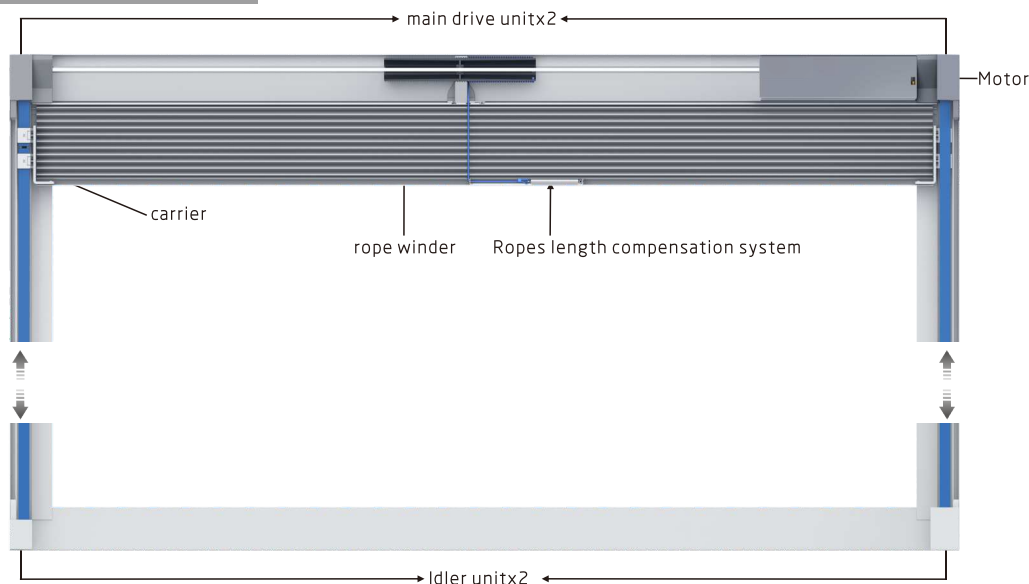
A/1 H12152

Features

Input voltage: AC100-240V



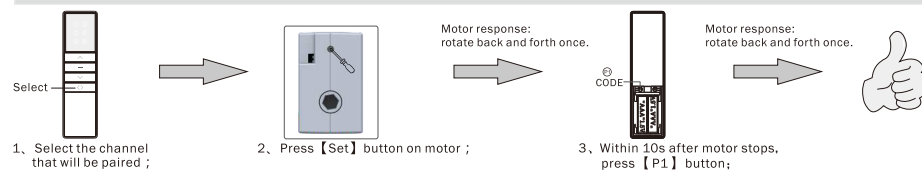
System diagram



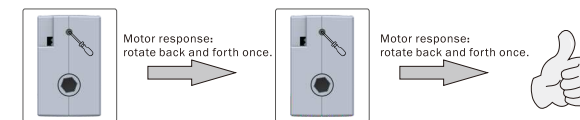
I Instructions

(*Take A13 button transmitter as an example. For other transmitters, please refer to the corresponding transmitter manual.)

Pairing transmitter and motor : Repeat the pairing operation once to eliminate the current pairing. A motor stores up to 5 transmitter channels. Adding a new transmitter channel will cover the earliest channel. For example, current paired channels are 1-5. If you add channel 6, paired channels will be 2-6.

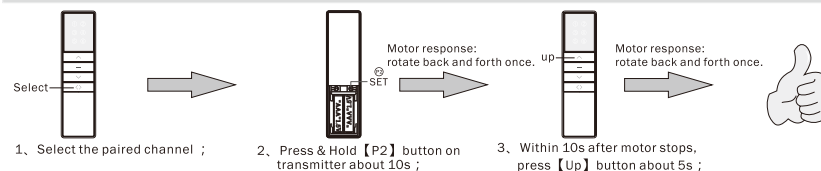


Clear pairing : Clear all pairing on the motor :

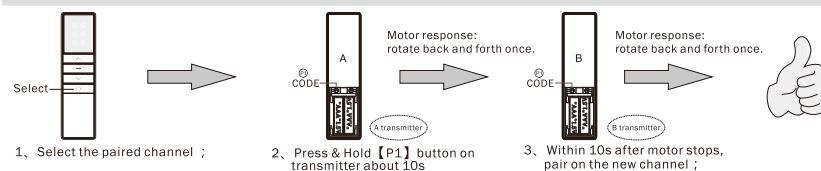


1. Press & Hold [Set] button on motor about 10s ;
2. Press [Set] button on motor again;

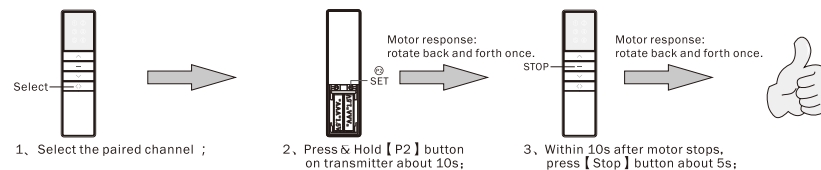
Inching / Continuous moving interchange : Default is continuous moving. After switching to inching moving, press & hold [Up] or [Down] button about 2s, motor will continuously moves;



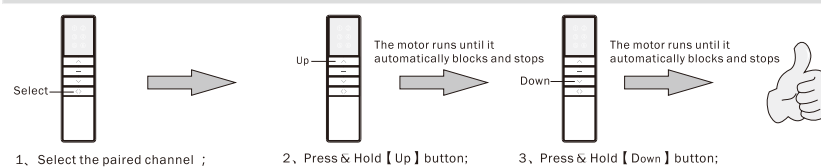
Copy : Add a new channel to control motor. (No need to touch motor);



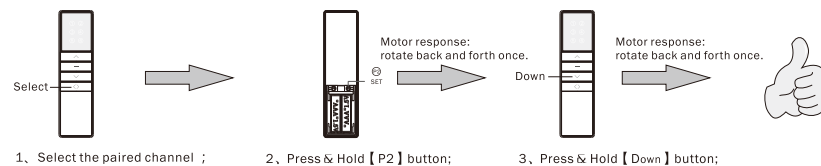
Reset direction : Reset motor direction. Such as: before reset, press transmitter up button, blinds run down. After reset, press transmitter up button, blinds run up.



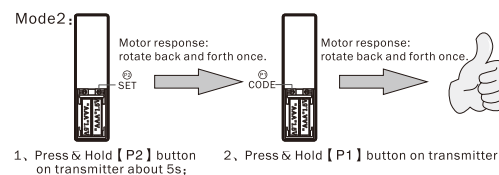
Limit Setting :



Precise limit: there is a gap in the default limit position, and it can be set to no gap.



Delete limit : Mode1: When there is limit, and when motor is blocked and stopped once during operation, the limit will be deleted.



Speed setting : Two speed can be adjusted. Default is first.

