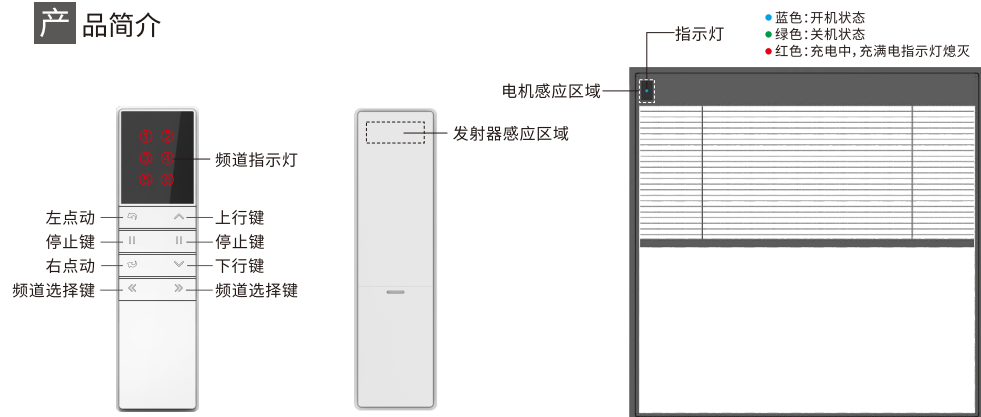


A13调光升降发射器-感应-说明书

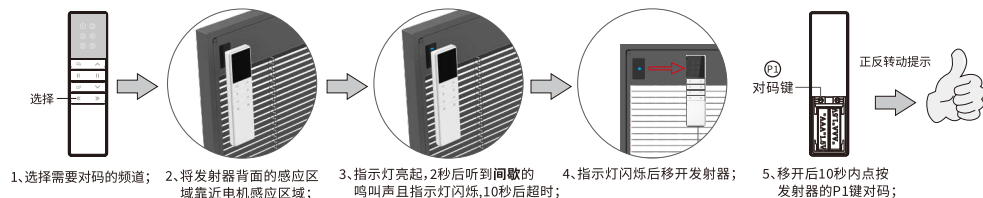
公司保留更改产品设计与说明书的权利,届时将不另行通知,图片仅供参考,具体以实物为准。 A/O H12234

产品简介

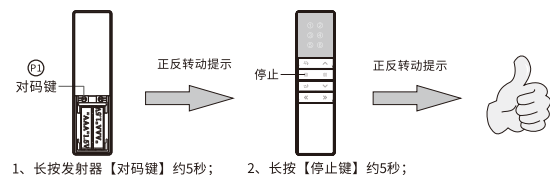


操作说明

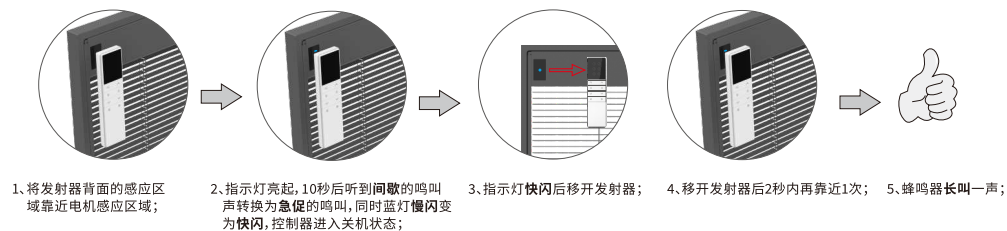
对码: 开机状态下(指示灯蓝色)才可以对码,重复操作对码步骤即是消除当前码。一台电机最多存5个遥控器,再增加遥控器只会覆盖第一个。



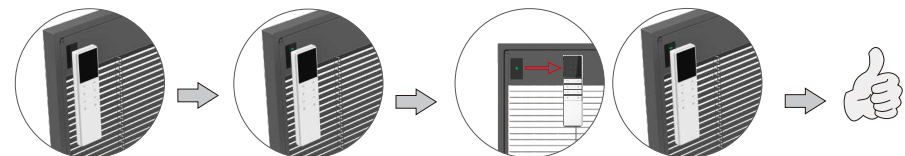
消全码: 清除电机上所有接收储存发射器的记忆,其它设置不会改变或清除(已对上码的遥控器才可进行操作)



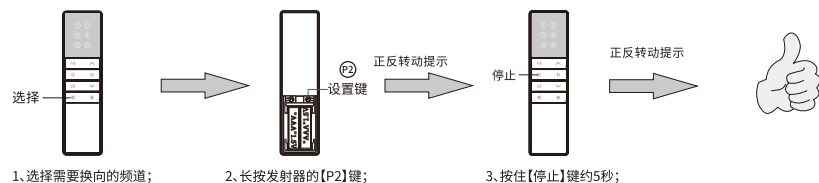
关机功能: 关机后遥控器控制无效,重复操作步骤即是开机功能,开机后遥控器可正常使用,15秒后超时自动退出。



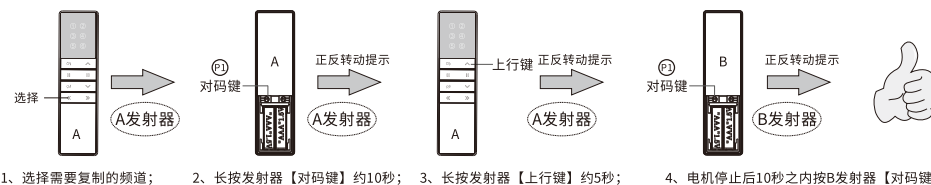
开机功能: 开机后遥控器可正常使用,重复操作步骤即是关机功能,关机后遥控器控制无效,15秒后超时自动退出。



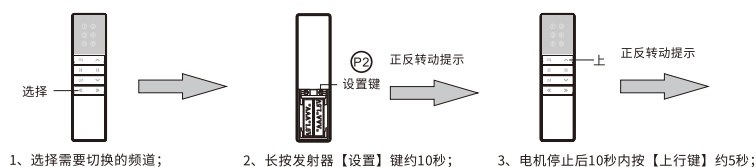
按键换向: 重复操作电机正反转方向切换。



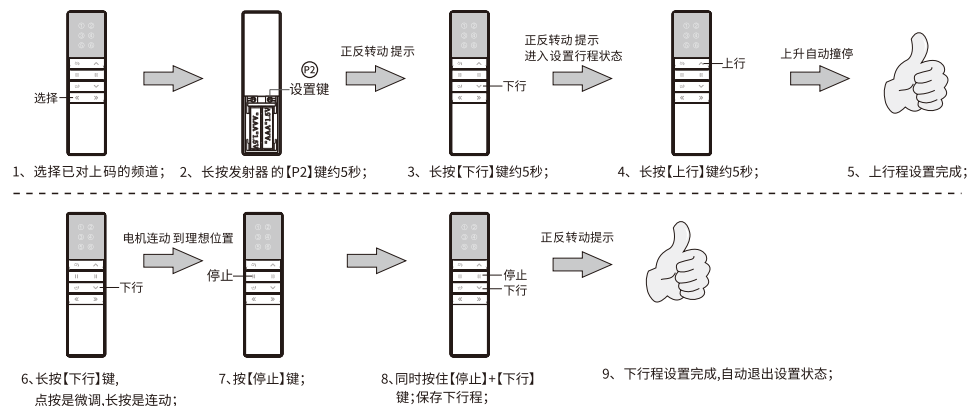
复制: 为已经对码的电机新增加一个B发射器。



点动/连动模式互换: 电机出厂前默认为连动模式,切换为点动模式后,长按住【上行键】或【下行键】约2秒电机机会一直连动运转。



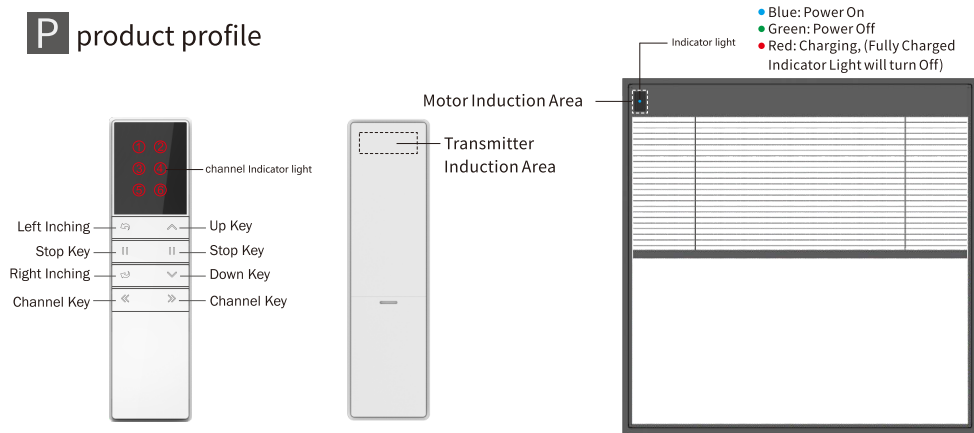
设置行程: 必须先设上行程,再设下行程,重复操作将会覆盖当前行程,30s内无操作自动退出设置状态。



A13 Dimming Lift Transmitter - Induction -Instruction Manual

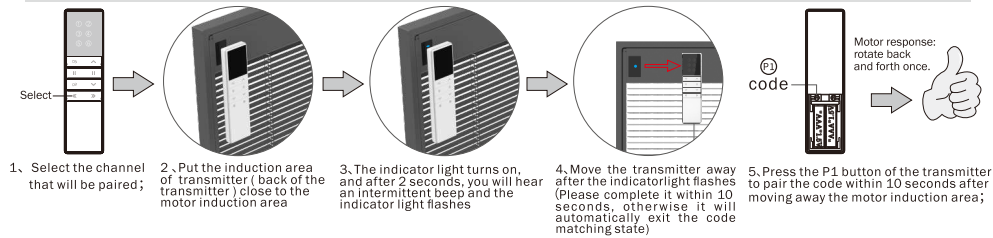
Company reserves the right to change product design and specifications without prior notice then ,photos are for reference only. A/0 H12234

Product profile

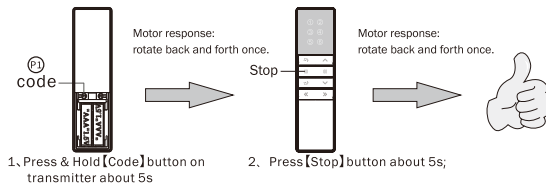


Transmitter operating instructions

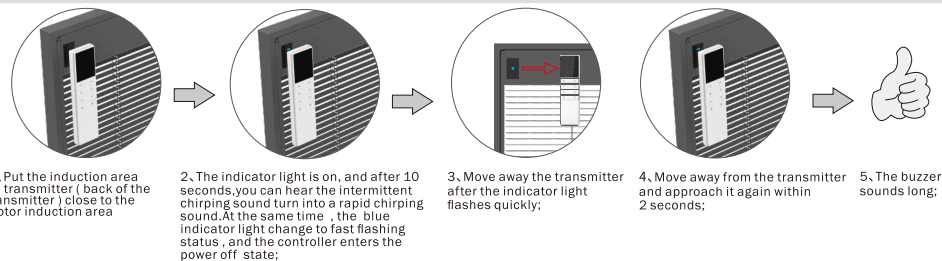
Pairing transmitter and motor. Only when the power is on (indicator light is blue) can the code be paired. Repeat the pairing operation once to eliminate the current pairing. A motor stores up to 5 transmitter channels. Adding a new transmitter channel will cover the earliest channel. For example, current paired channels are 1~5. If you add channel 6, paired channels will be 2~6.



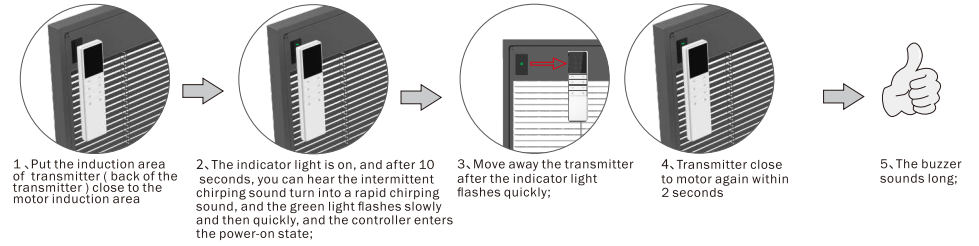
Clear pairing : Clear all pairing on the motor, and other settings will not be changed or cleared (only remote controls that have been paired can be operated)



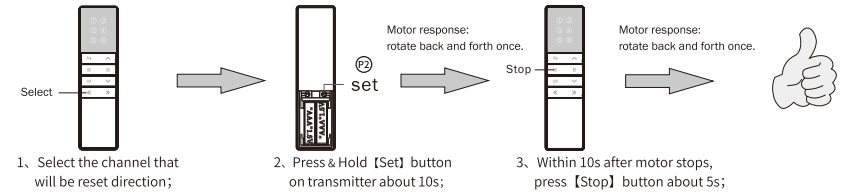
Power off function: After powering off, the remote control is invalid, repeat the operation, motor will power on, the remote control can be used normally after powering on, (Please complete it within 15 seconds, otherwise it will automatically exit and fail)



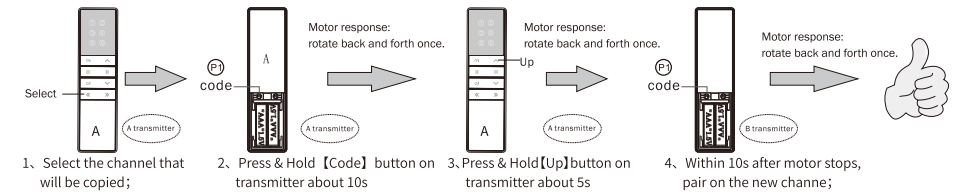
Power-on function: The remote control can be used normally after powering on, and repeat the operation, Motor will power off. After powering off, the remote control control is invalid, (Please complete it within 15 seconds, otherwise it will automatically exit and fail)



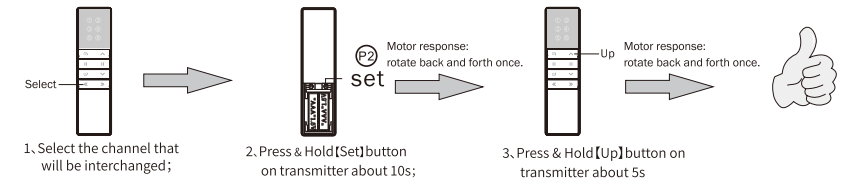
Reset directions : Repeat the operation to reset directions of the motor.



Copy: Add a new channel to control motor. (No need to touch motor):



Inching / Continuous moving interchange Default is continuous moving. After switching to inching moving, press & hold [Up] or [Down] button about 2s, motor will continuously moves:



Set limit : You must set the up limit first, and then set the down limit. Repeating the operation will cover the current limit. If there is no operation within 30s, the setting state will be automatically exited.

