

A5系列接收器使用说明书

公司保留更改产品设计与说明书的权利，届时将不另行通知，图片仅供参考，具体以实物为准。

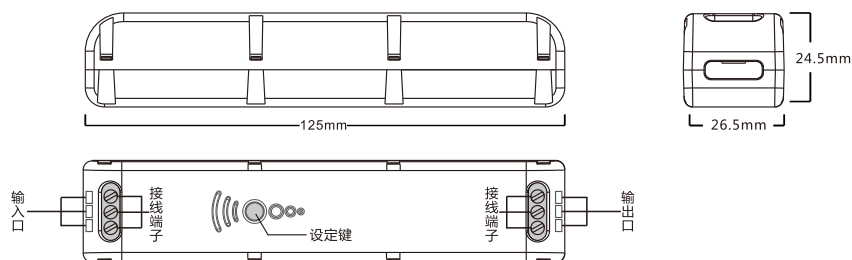
A/3 H12021

产品特性

A5系列接收器是采用先进的无线电（RF）和单片机（MCU）控制技术开发的一款电机控制系统。通过 868 Mhz 的无线射频传送，遥控距离可达100米以上（可视），穿隔两面加固混凝土墙至少30米。

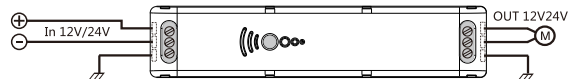
编号	产品名称	电流		功率	工作频率	工作温度
D31012	A5-12V-1A接收器	1A		12W	868MHz	-20℃ ~ +60℃
D31014	A5-12V-6A接收器	6A		72W	868MHz	-20℃ ~ +60℃
D31011	A5-24V-500mA接收器	500mA		12W	868MHz	-20℃ ~ +60℃
D31013	A5-24V-6A接收器	6A		144W	868MHz	-20℃ ~ +60℃
D31010	A5-110V-220V接收器	110V	1A	110W	868MHz	-20℃ ~ +60℃
		220V	1A	220W	868MHz	-20℃ ~ +60℃

接收器示意图

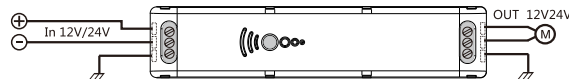


接收器和发射器面板按键说明

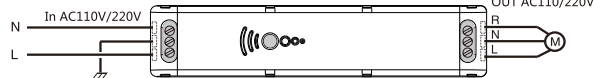
A5 轻巧型 12V/1A 接收器
A5 轻巧型 24V/500mA 接收器



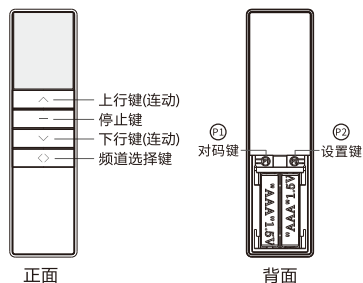
A5 轻巧型 12V/6A 接收器
A5 轻巧型 24V/6A 接收器



A5 轻巧型 110/220V 接收器



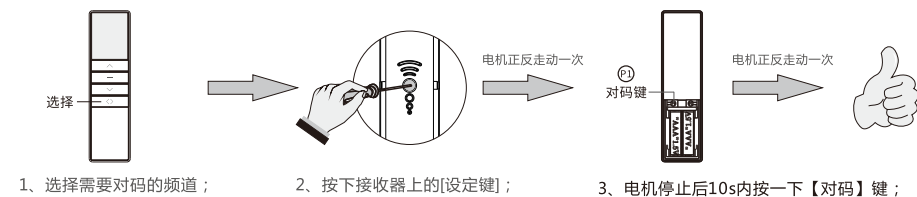
俯视图



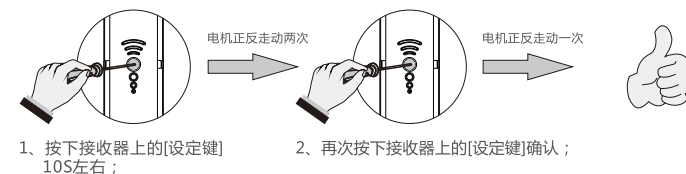
A3发射器

编程操作方法 (以A3-5锁频发射器为例操作说明，其他发射器请参考相应说明书)

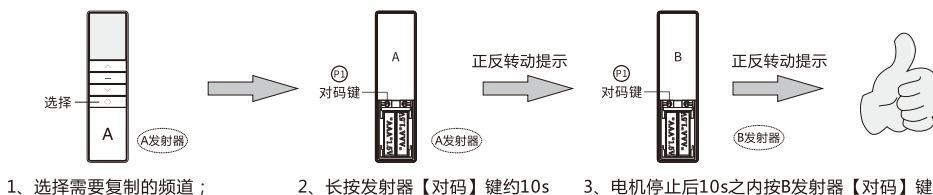
对码：发射器与接收器配对，发射器必须与接收器对码才可以遥控操作接收器。 * 重复该步骤即可取消该频道的对码。



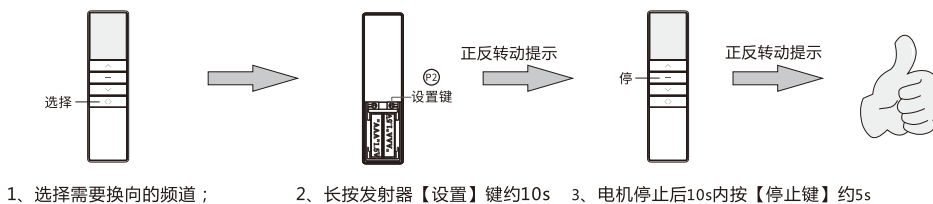
消码：取消发射器与接收器的配对。



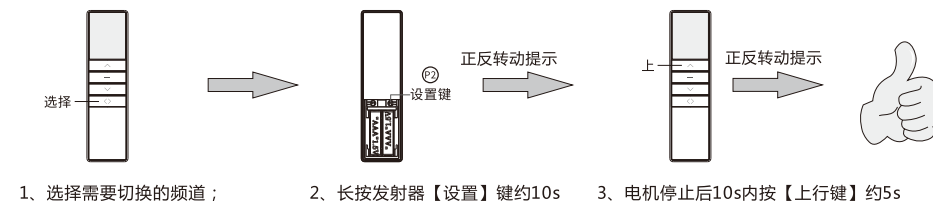
复制：为已经对码的接收器增加另一个发射器，接收器可被多个发射器控制。



换向：为已经对码的接收器更换运转方向。如：换向前，按发射器上行键，电机往下运行；换向后，按发射器上行键，电机往上运行。



连动/点动模式互换： * 注：电机默认连动模式。连动模式切换点动模式后，长按住[上行键]/[下行键]电机一直连动运转。



A5 Receiver Operating Manual

Company reserves the right to change product design and specifications without prior notice then , photos are for reference only.

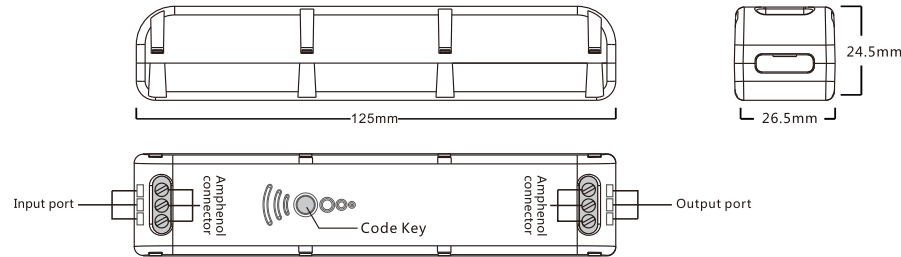
A/2 H12021

Product Features

A5 light receiver is a motor control system, it combine with wireless (RF) & single-chip microcomputer (MCU) control technology.
With 868MHz Radio frequency , control distance can reach up 100 m (visible) ,
Can get through 2 reinforced concrete wall at least 30m.

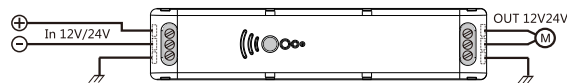
Item No.	Product Name	Current	Power	Working Frequency	Working Temperature
D31012	A5-12V-1A receiver	1A	12W	868MHz	-20℃ ~ +60℃
D31014	A5-12V-6A receiver	6A	72W	868MHz	-20℃ ~ +60℃
D31011	A5-24V-500mA receiver	500mA	12W	868MHz	-20℃ ~ +60℃
D31013	A5-24V-6A receiver	6A	144W	868MHz	-20℃ ~ +60℃
D31010	A5-110V-220V receiver	110V 1A	110W	868MHz	-20℃ ~ +60℃
		220V 1A	220W	868MHz	-20℃ ~ +60℃

Wire diagram

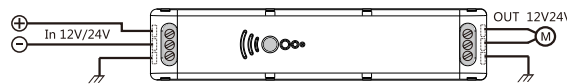


Receiver and transmitter panel key

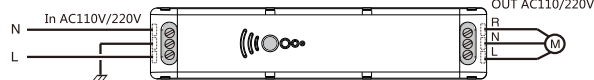
A5-12V-1A receiver
A5-24V-500mA receiver



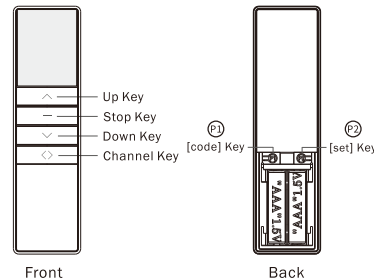
A5-12V-6A receiver
A5-24V-6A receiver



A5-110/220V receiver



Vertical view

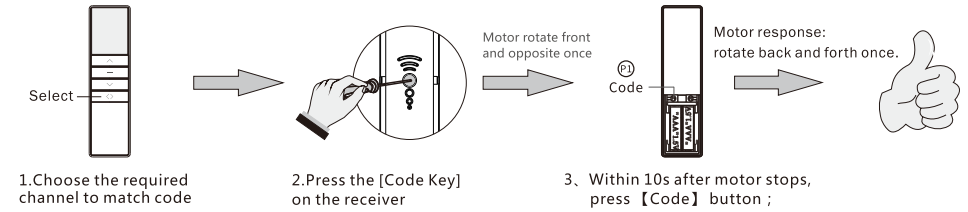


A3 Transmitters

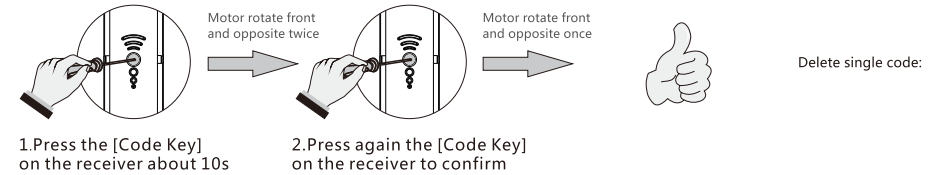
Programming Operation Manual

(Below operating step are following the "A3 touch screen transmitter" , for others transmitter please refer to the related detailed specification)

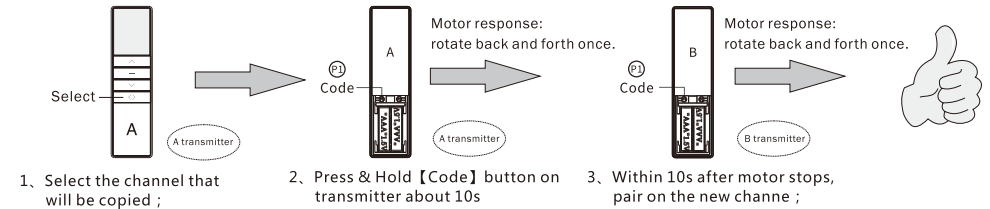
Match Code : The transmitter must match code with receiver, so that the receiver can be remote control by transmitter.
* Repeat operating match code procedure once can delete the code (Delete code on transmitter).



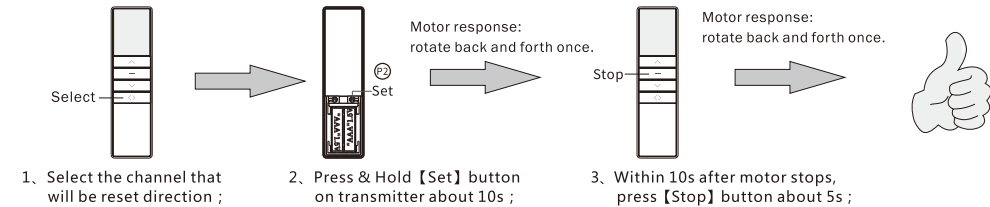
Delete Code Setting: Cancel match code between transmitter and receiver



Copy: Add a new transmitter for receiver which one had complete to match code. Then the receiver can be controlled by many transmitter



Change the direction: Change the direction for receiver which one had completed match code. Eg. before change direction, touch up key on the transmitter, motor will move down, after change direction, touch up key on the transmitter, motor will move up.



Continuous / Inching move mode change: * Note: The motor continues moving by default. After changing continues and jogging moving, press [Up Key] / [Down Key], Then motor will keep continues moving.

