

# A3六路AC-24-1触摸屏接收器说明书

公司保留更改产品设计与说明书的权利，届时将不另行通知，图片仅供参考，具体以实物为准。

A/2 H12050

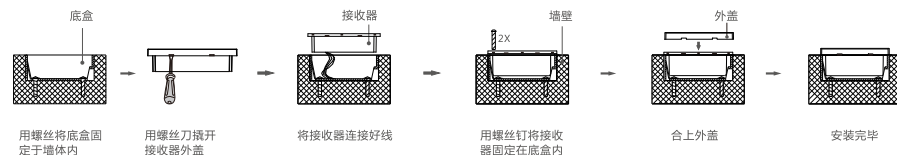
## 产品特性

A3六路AC-24-1触摸屏接收器通过868MHz的无线射频传送，接收距离可达100米以上(可视)，穿隔两面加固混凝土墙至少30米。868MHz频率在无线通信中有抗干扰能力强、接收灵敏度高、中心频率稳定、调试方便等特点。

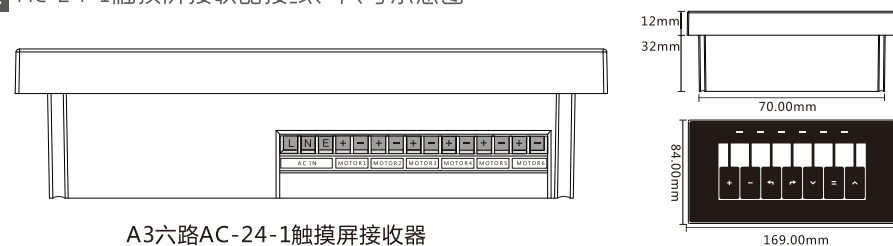
编号	产品名称	规格	输入电源	输出路数	输出负载	输出电源(Max)	工作频率	工作温度
D33051	A3六路AC-24-1触摸屏接收器	黑色	AC100~240V 50/60Hz	六路	直流电机	DC24V 1A×6	868MHz	-20℃~+65℃ 不要结水珠

## 安装示意图 (最佳安装高度: 150cm)

- 1、请勿使接收器接触金属物体(接触会影响无线电波的传播)
- 2、接收器与地面之间的最短距离: 150 cm;
- 3、接收器与屋顶之间的最短距离: 30 cm;
- 4、接收器与发射器之间的最短距离: 30 cm;
- 5、两个接收器之间的最短距离: 20cm。

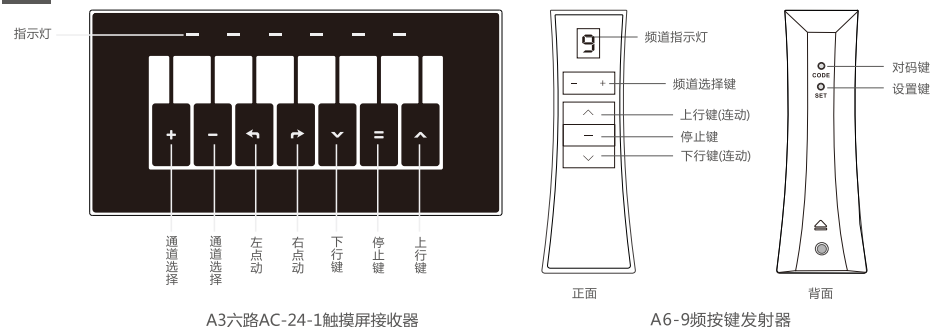


## 接线、尺寸示意图



A3六路AC-24-1触摸屏接收器

## 接收器和发射器面板按键说明



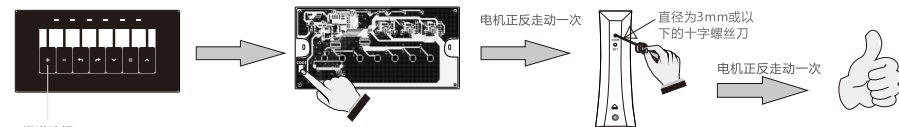
A3六路AC-24-1触摸屏接收器

A6-9频按键发射器

## 编程操作方法 (以A6-9频按键发射器为例进行说明，其它发射器请参考相应的发射器说明书。)

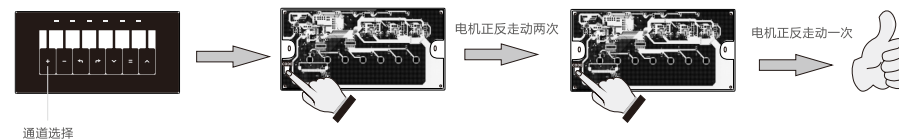
对码：接收器与发射器配对，接收器必须与发射器对码才可以被遥控操作。

注：重复一次对码操作可以取消单个发射器与接收器的配对。



- 1、打开面盖,选择好相应代码通道。
- 2、按下【CODE键】
- 3、电机停止后10s内,按住发射器背面的【CODE键】。

消码：取消全部发射器与接收器配对。



- 1、打开面盖,选择好相应代码通道
- 2、按住【CODE键】；
- 3、再按一下【CODE键】；

连动/点动切换：切换后，按遥控器上行键/下行键，接收器控制的电机小幅度运转；长按住遥控器上行键/下行键，电机一直运转。



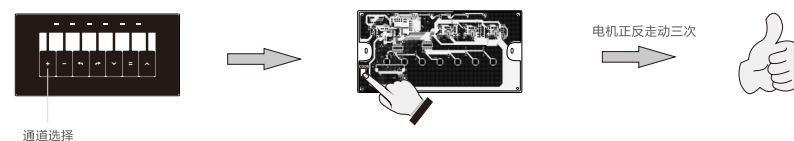
- 1、同时按下同一路的【上行键+停止键】约5s；

换向：更换运转方向。如：换向前，按发射器上行键，窗帘往下运行；换向后，按发射器上行键，窗帘往上运行。



- 1、同时按下同一路的【上行键+下行键】约5s；

锁屏功能：(重复1次操作则取消锁屏)



- 1、选择好所需频道数；
- 2、按住【CODE键】；

## A3 six channels AC-24V-1A touch receiver specification

Company reserves the right to change product design and specifications without prior notice then, photos are for reference only.

A/2 H12050

## Product Features

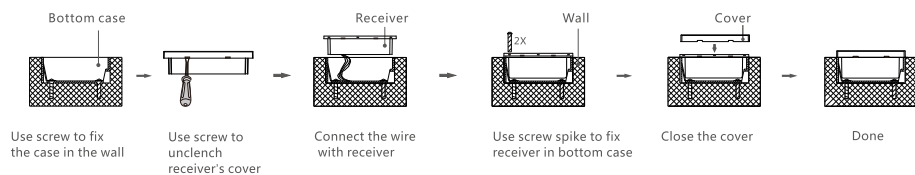
A3 six channels AC-24V-1A touch Receiver use 868 MHz radio frequency, Receive distance is above 100m (visual range), two reinforced concrete wall at least 30 m.

868 MHz radio frequency with a strong anti-jamming capability, high receiving sensitivity, stable center frequency and convenient debugging, etc function in wireless communications.

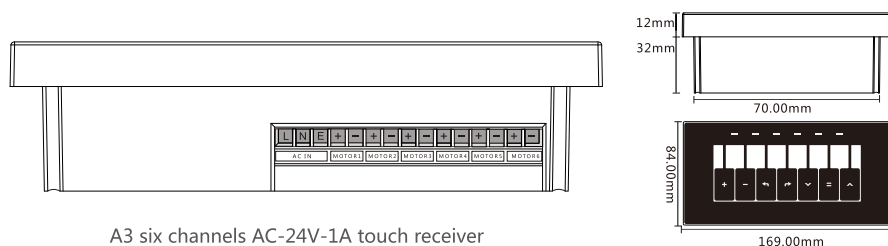
Serial Number	Product name	Specifications	Input Power	Number of Outputs	Output Load	Output Power (Max)	Working Frequency	Using Temperature
D33051	A3 six channels AC-24V-1A touch receiver	Black	AC100-240V 50/60Hz	Six Channel	DC motor	DC24V 1Ax6	868MHz	-20°C ~ +65°C Don't sweat

## Install Sketch Map

- 1.Can not bring receiver into contact with metal object ( otherwise will influence radio transmit )
- 2.Shortest distance between receiver with ground: 150cm
- 3.Shortest distance between receiver with roof: 30cm
- 4.Shortest distance between receiver with transmitter: 30cm
- 5.Shortest distance between 2 receivers: 20cm

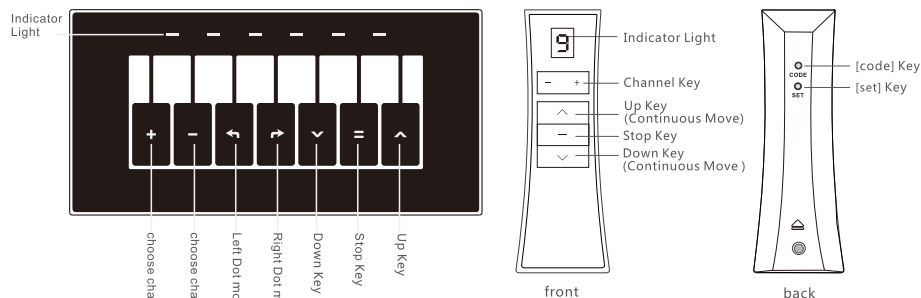


## Size and wiring diagram for AC-24V-1A touch receiver



A3 six channels AC-24V-1A touch receiver

## Receiver and transmitter key press instruction



A3 six channels AC-24V-1A touch receiver

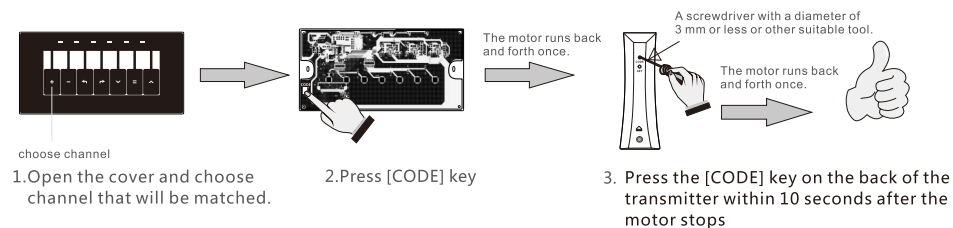
A6-9 button transmitter

## Programming operation method

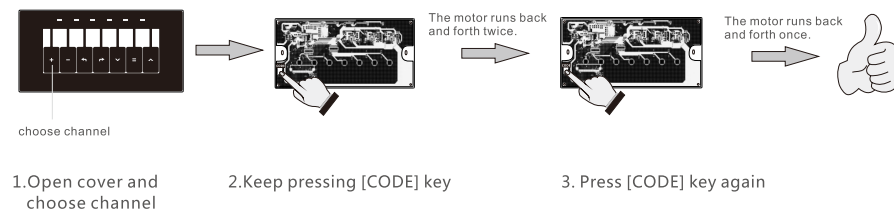
(To A6-9 button transmitter as an example to illustrate, for other transmitters, please refer to the corresponding manual)

**Match Code:** To match receiver and transmitter, then you can control motor with transmitter.

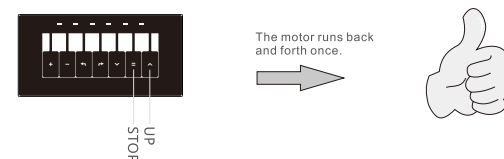
**Notes:** Repeat one time match code operation to cancel original match.



**Clean match:** Clean match between receiver and all transmitters.

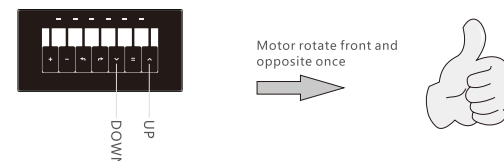


**Change over:** Continuous running and inched running. When motor has been changed to inched running, press up/down on remote. The motor will run momentarily. Keep pressing up/down on remote, the motor will run continuously.



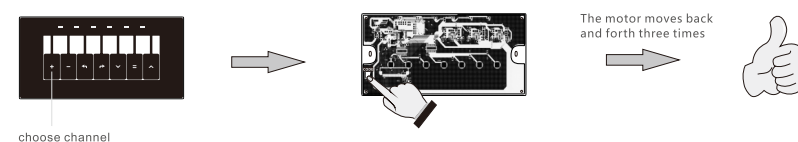
1. Press [up + stop] of same channel for 5s

**Change direction:** for example, now press up, blinds up. After change direction, press up, blinds down.



1. Press [up + down] of same channel for 5s

**Lock screen function:** (repeat 1 time operation to cancel the lock screen)



1. choose needed channel