

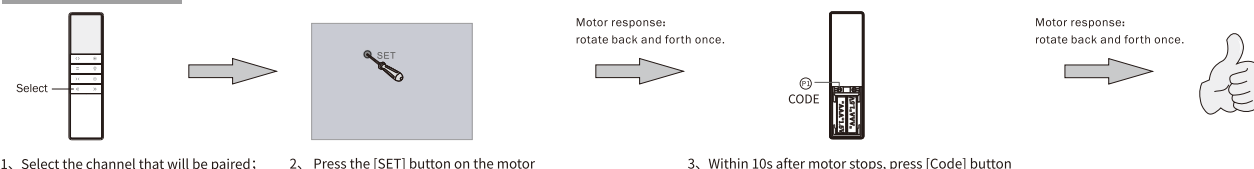
Ambient light curtain motor instructions

Company reserves the right to change product design and specifications without prior notice then ,photos are for reference only. A/0 H12267

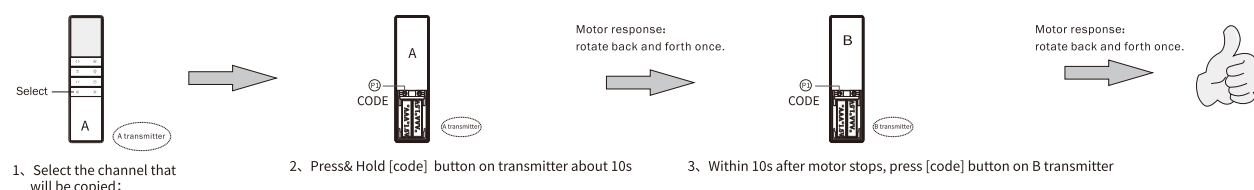
Instructions: (Take A13-6 button transmitter as an example, for other transmitters, please refer to the corresponding transmitter manual.)

Pairing transmitter and motor

Repeat the steps to clean current pairing

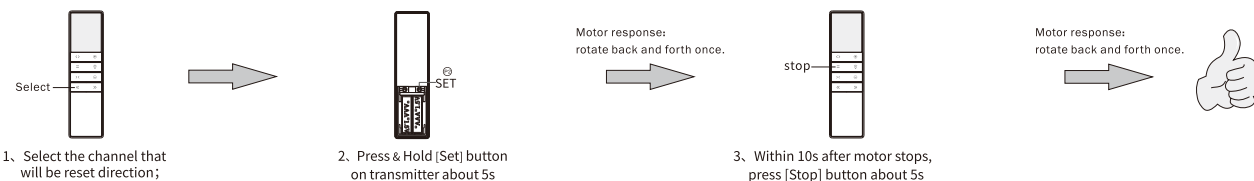


copy add a new channel to control motor. (No need to touch motor)

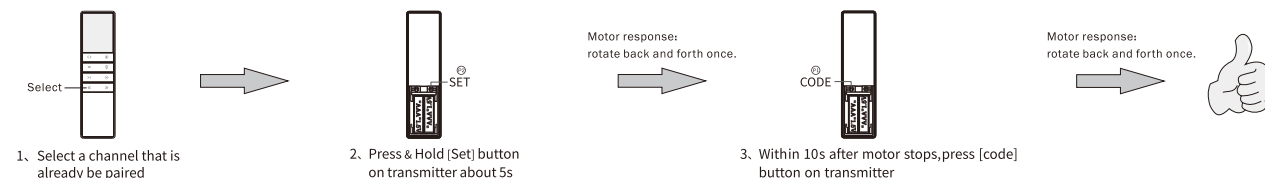


Reset direction

Reset motor direction. Such as: before reset, press transmitter up button, blinds runs down. After reset, press transmitter up button, blinds runs up.

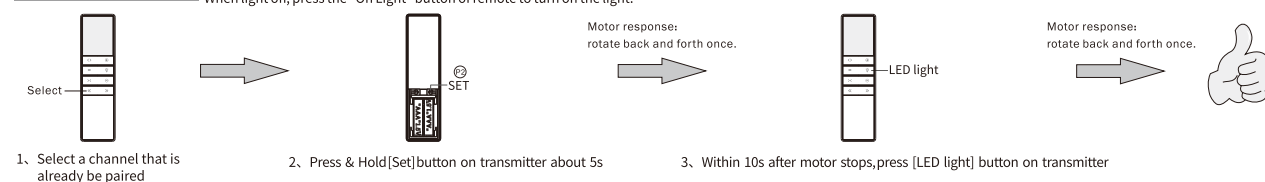


Cancel limit



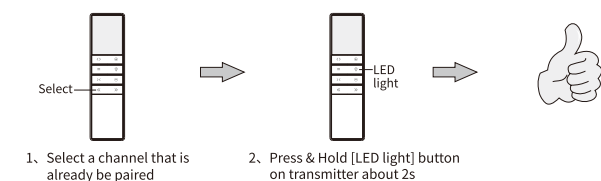
Ambient light setting

Default: ambient light is automatically turned on when motor is running. After below setting, light will not turn on when motor is running. Repeat the setting, it will turn on when motor is running. When light off, press the "On Light" button of remote to turn on the light.



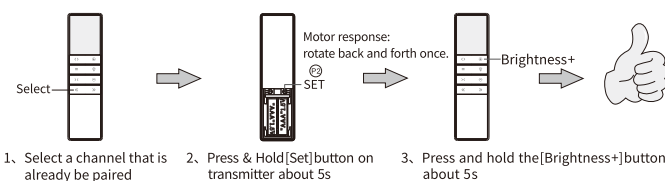
change light colors

When light off, press and hold the "Light" button for 2 seconds, light color will automatically change. if press and hold always, the max changing is 3 cycles.

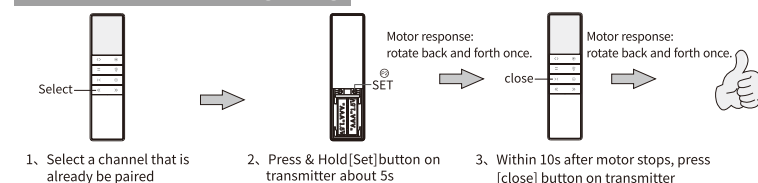


Switching between 1 color and 3 colors mode

Repeating the operation to switch between 1 color and 3 colors mode

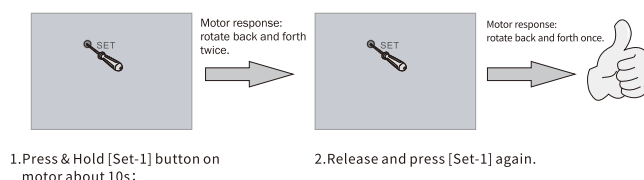


Fabric rebound location exchange setting



Restore factory settings

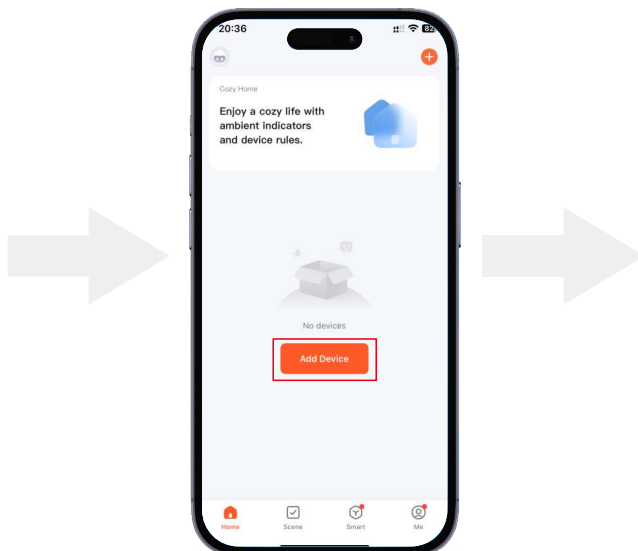
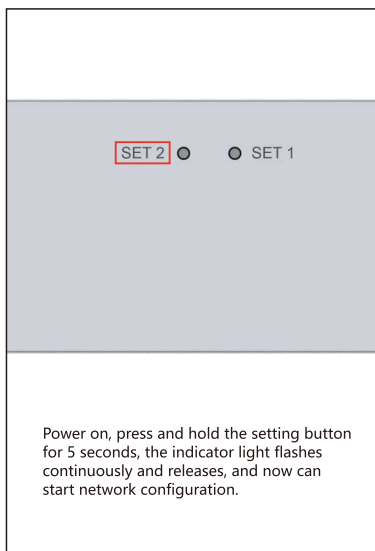
clear all settings on the motor and restore to the default state



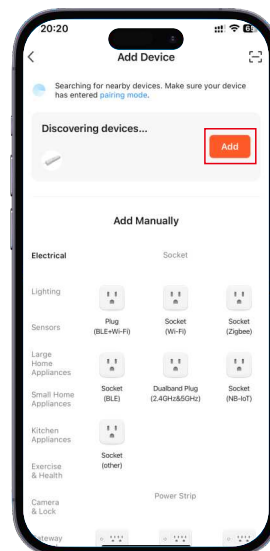
Manual Of NTY Wifi To Curtain Motor

Company reserves the right to change the product design and manual without prior notice. The pictures are for reference only, and the actual product shall prevail.

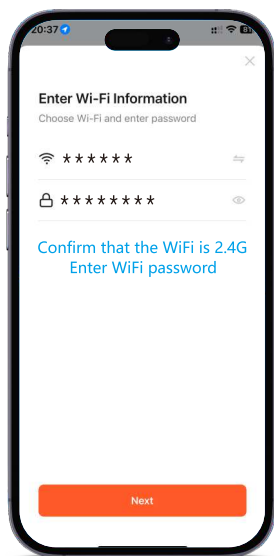
WiFi configuration method one (direct connection)



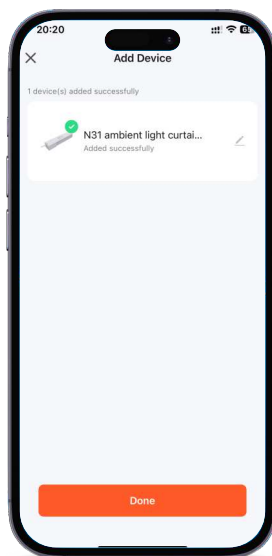
01. Open the Tuya app and select "Add device" on the homepage



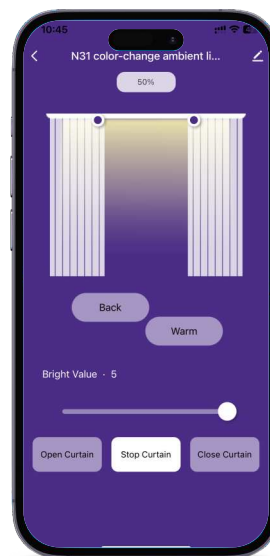
02. Select "Add" after discovery



03. Enter the WiFi information and click "Next" after completion



04. Click "Done" after the device is successfully connected



05. The final operation interface is shown in the figure above.

Clean network



Long press the setting button for 5 seconds, the indicator light flashes continuously and releases. Network cleaned.

QR Code for Configure Network



Configure Network QR Code

Reasons for network configuration failure

1. Confirm whether the mobile phone Bluetooth is turned on
2. Confirm whether the router supports 2.4G network
3. Confirm whether the router assigns IP addresses freely

Voice service has been activated

