

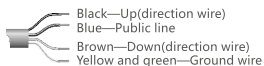
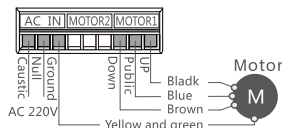
# K45-TP Manual Tubular Motor Operating Manual

Company reserves the right to change product design and specifications without prior notice then, photos are for reference only.

H12006 A/1

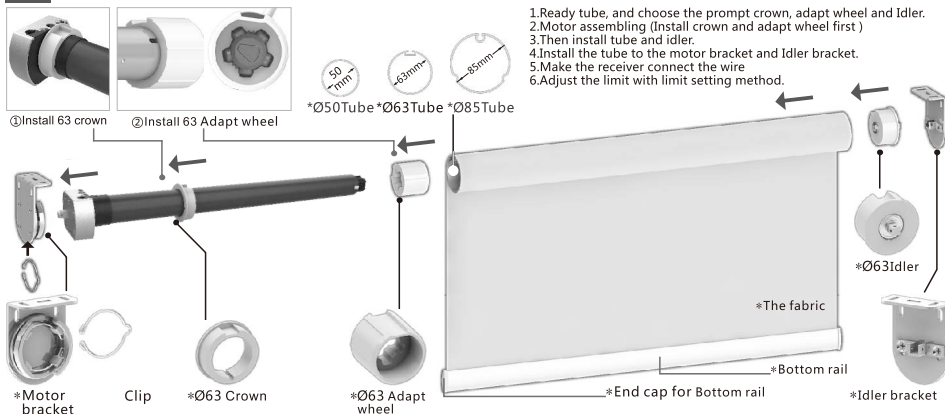
## Electrical diagrams and wiring method

### 110V/220V wiring diagram



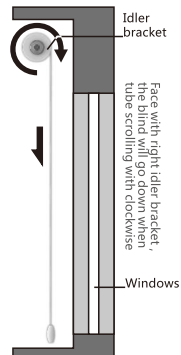
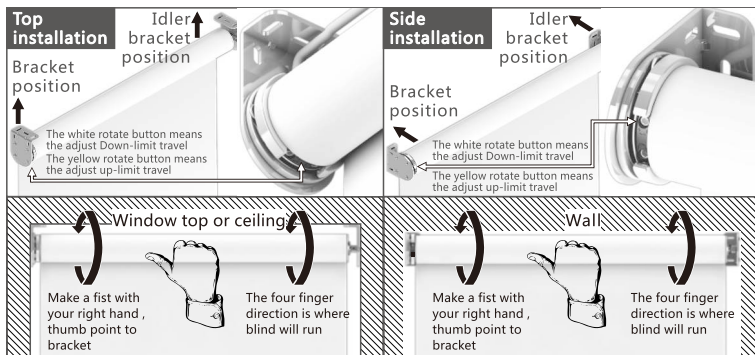
## Electric roller blind draft

Note: the accessories which mark with “\*” are not standard assembly unit. (Available for custom made accessories.)



Note: Try to operate the whole roller blinds after installation, especially to check the fabric straight or not.

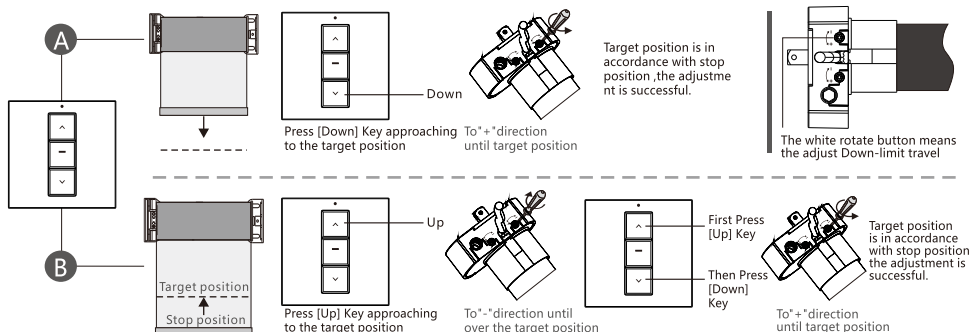
Roller blind scrolling direction diagram:



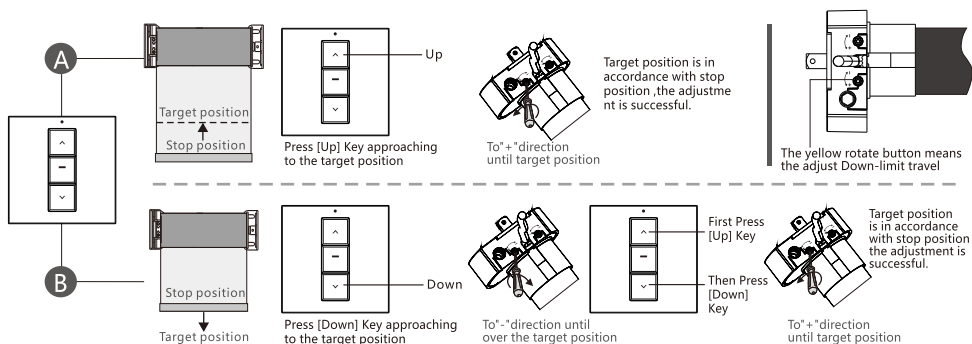
## L limit travel adjustment method \*First adjust Down-limit travel and then up-limit travel. (Schematic diagram for the external receiver; if using the in-built receiver, it can be operated by transmitter button directly.)

Kindly remind: if the curtain movement direction is different with receiver key direction, Please change the motor direction wire or refer to the receiver manual for the reverse operation.

### Down-limit travel adjustment method (Such as A9 single channel AC 100-240V receiver. )



### Up-limit travel adjustment method (Such as A9 single channel AC 100-240V receiver. )



## C Common faults and Solutions

No.	Appearance	Fault reason	Solution
1	The motor does not rotate or slow to start after be installed and electrified.	<ol style="list-style-type: none"> <li>1. The power is not consistent with the rated voltage of the motor</li> <li>2. Overload</li> <li>3. Improper installation causes to the parts and accessories clamping the motor</li> <li>4. The two trip switches are not opened in the motor.</li> </ol>	<ol style="list-style-type: none"> <li>1. Replacing the motor which matches power voltage</li> <li>2. Replacing the motor which matches the load</li> <li>3. Checking the part of accessories are properly installed;</li> <li>4. Rotating the crown crust 1-2 circle in any direction.</li> </ol>
2	The motor is only one-way operation after be electrified.	The trip switches are not opened in the motor.	Rotating the crown crust 1-2 circle in the present direction
3	The motor suddenly stops when it is running.	<ol style="list-style-type: none"> <li>1. The motor has entered the state of the overheating protection;</li> <li>2. Power failure</li> <li>3. Turning into the end of setting.</li> </ol>	<ol style="list-style-type: none"> <li>1. Wait about 3-10 minutes ( depending on the different of ambient temperature ). It automatically returns to normal working condition after the motor is cooling</li> <li>2. To be recovered when has electricity.</li> <li>3. Whether needing to adjust the rip button or not depends on the situation.</li> </ol>
4	The fabric is in upward operation after pressing the down button of receiver.	The control direction of the receiver is opposite to the wiring of the motor	Exchange the direction wiring of the motor or press the receiver's reversing set.