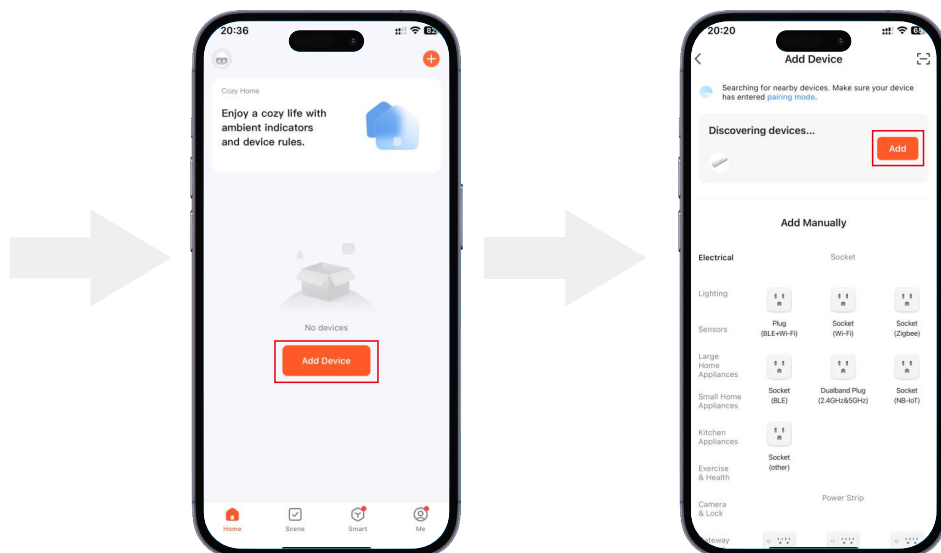
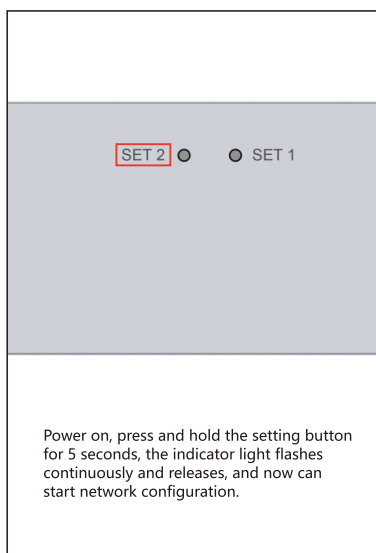


Manual Of NTY Wifi To Curtain Motor

Company reserves the right to change the product design and manual without prior notice. The pictures are for reference only, and the actual product shall prevail.

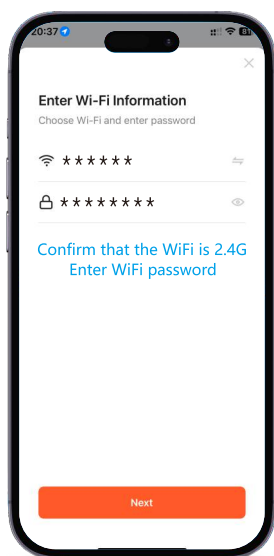
H12195 A/1

WiFi configuration method one (direct connection)

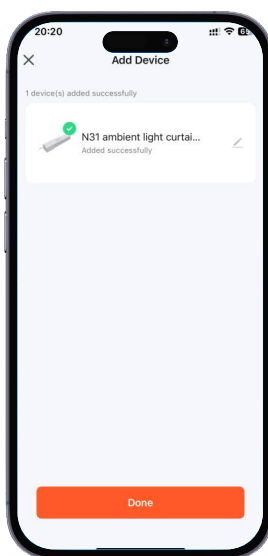


01. Open the Tuya app and select "Add device" on the homepage

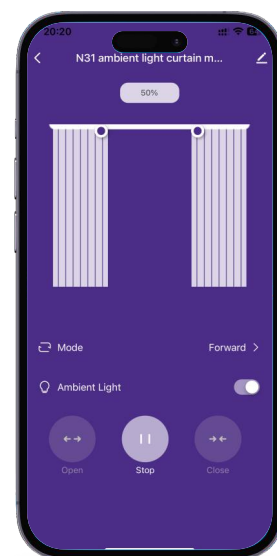
02. Select "Add" after discovery



03. Enter the WiFi information and click "Next" after completion



04. Click "Done" after the device is successfully connected



05. The final operation interface is shown in the figure above.

Clean network



Long press the setting button for 5 seconds, the indicator light flashes continuously and releases. Network cleaned.

QR Code for Configure Network



Configure Network QR Code

Reasons for network configuration failure

1. Confirm whether the mobile phone Bluetooth is turned on
2. Confirm whether the router supports 2.4G network
3. Confirm whether the router assigns IP addresses freely

Voice service has been activated

