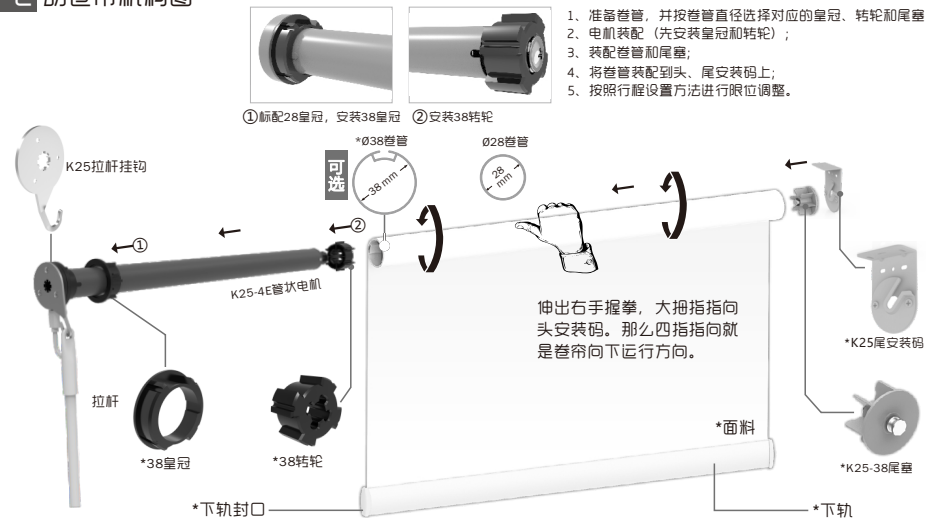


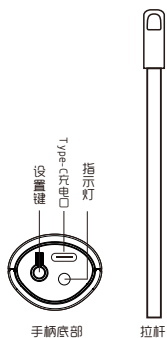
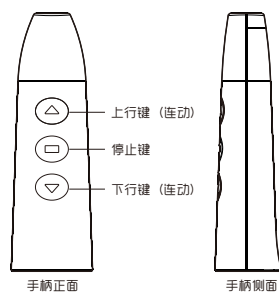
# K25-4E 管状电机-手柄使用说明书

公司保留更改产品设计与说明书的权利, 届时将另行通知, 图片仅供参考, 具体以实物为准。 H12096 A/1

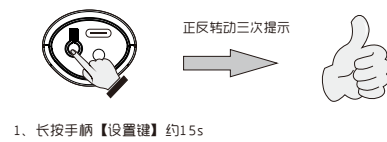
## 电动卷帘机构图 注: 带“\*”号的是非电机标配部件 (可订制零件)



## 按键功能说明

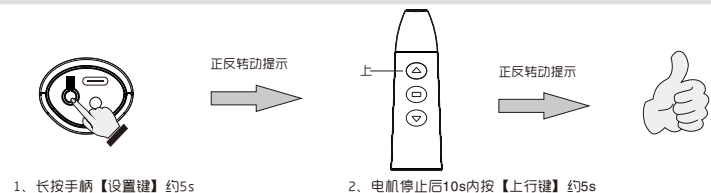


转速设置: 二档转速可调节, 出厂前默认第一档:

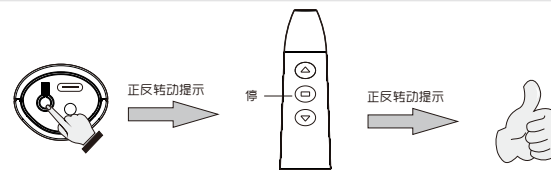


## 操作说明

点动/连动模式互换: 电机出厂前默认为连动模式, 切换为点动模式后, 长按住【上行键】或【下行键】约2s电机合一直连动运转;

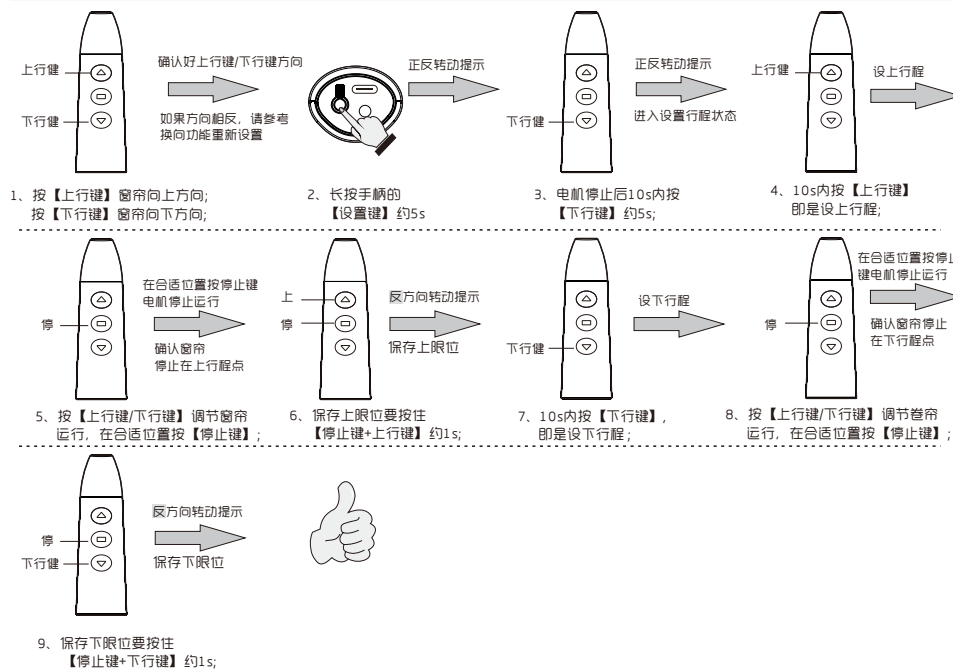


换向: 换向前, 按手柄上行键, 窗帘往下运行; 换向后, 按手柄上行键, 窗帘往上运行:

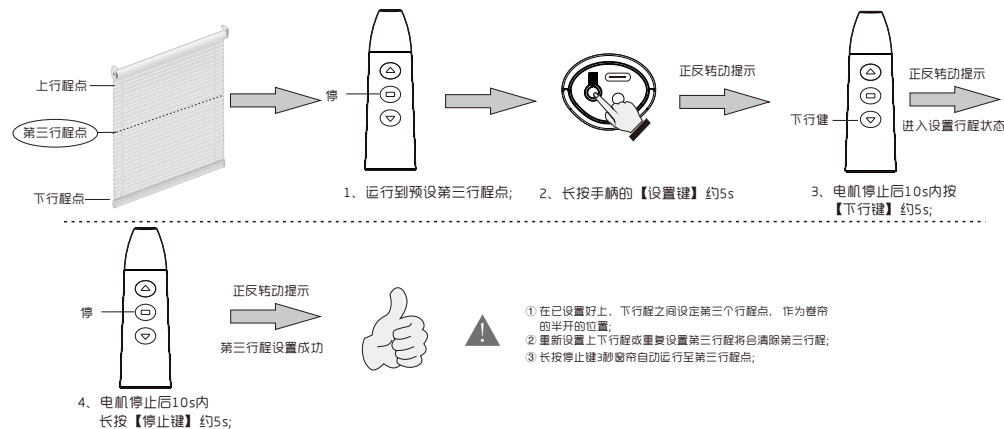


1. 长按手柄【设置键】约5s
2. 电机停止后10s内按【停止键】约5s

上、下行程设置: 指按手柄【上行键或下行键】时, 窗帘向上/向下运行, 所能到达的理想最高/最低位置。



第三行程设置: 重复操作设置将会取消第三行程点:

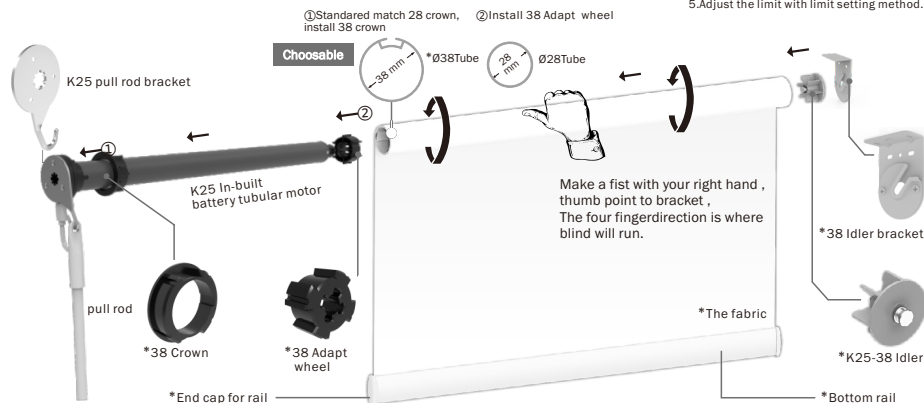


**F Electric roller blind draft** ( If the accessory with "\*" that mean could be OEM )



- Ready tube, and adapt wheel and motor assembly.
- Motor assembly.

1. Ready tube, and choose the prompt crown, adapt wheel and Idler.
2. Motor assembling  
(Install crown and adapt wheel first )
3. Then install tube and idler.
4. Install the tube to the motor bracket and Idler bracket.
5. Adjust the limit with limit setting method.

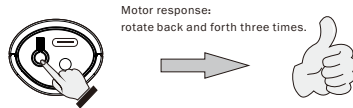


The diagrams illustrate the components of the hand shank from four different views:

- hand shank front:** Shows the front view of the hand shank with three buttons labeled: Up Key (top), Stop Key (middle), and Down Key (bottom).
- hand shank side:** Shows the side view of the hand shank, highlighting its elongated shape.
- hand shank bottom:** Shows the bottom view of the hand shank, featuring the Type-C charging port, the Indicator light, and the [set] Key.
- pull rod:** Shows the pull rod, a long, thin vertical component.

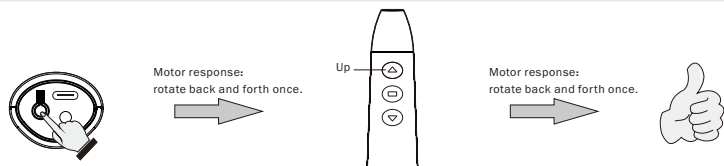
**Speed setting:** Two speed can be adjusted, Default is first;

Motor response:  
rotate back and forth three times.



- 1、Press & Hold **【 Set 】** button on motor about 15s;

**Inching / Continuous moving interchange:** Default is continuous moving. After switching to inching moving, press & hold **[ Up ]** or **[ Down ]** button about 2s, motor will continuously moves.

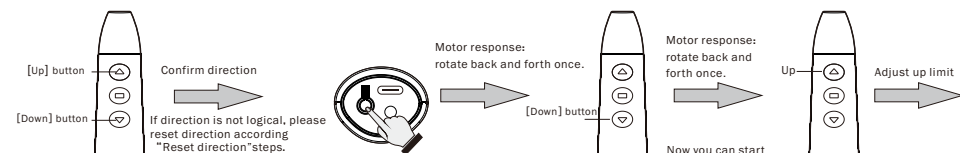


- 1、Press & Hold **[ Set ]** button on transmitter about 5s;
- 2、Within 10s after motor stops, press **[ Up ]** button about 5s;

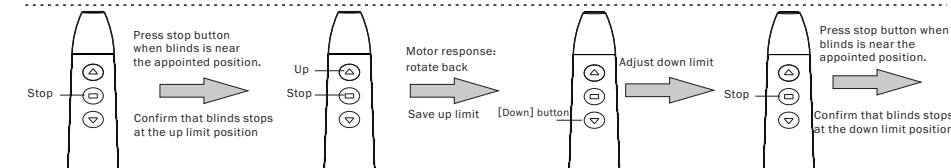
Motor response:  
rotate back and forth once.

- 1、Press & Hold **[ Set ]** button on transmitter about 10s;
- 2、Within 10s after motor stops, press **[ Stop ]** button about 5s;

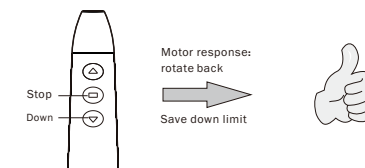
**Adjusting Limits:** When you press **【 Up 】** or **【 Down 】** button, the blinds will move up or down and stop automatically at the appointed position.



1. Press up button, blinds up.  
Press down button, blinds down.
2. Press & Hold **[Set]** button on transmitter about 10s:
3. Within 10s after motor stops, press **[Down]** button about 5s:
4. Within 10s press **[Up]** button to adjust up limit;

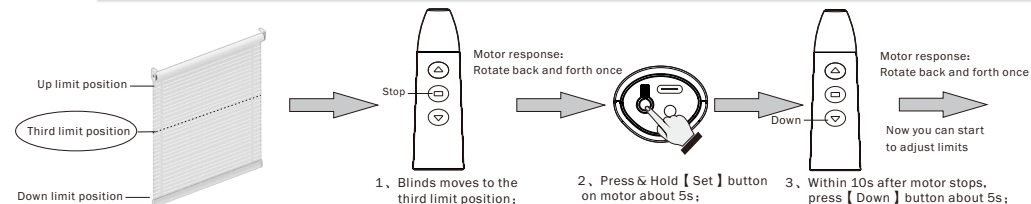


5. Press **[Up/Down]** button to move blinds, and then stop blinds at the appointed position;
6. Press & hold **[Stop + Up]** about 1s to save up limit;
7. Within 10s press **[Down]** button to adjust down limit;
8. Press **[Up/Down]** button to move blinds, and then stop blinds at the appointed position;

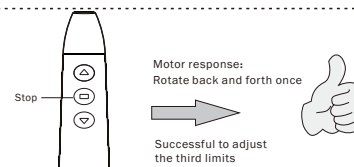


- 9、Press & hold **【 Stop + Down 】**  
about 1s to save down limit;

**Adjust the third limit:** Repeat the operation once to eliminate the third limit:



- 1、Blinds moves to the third limit position;
- 2、Press & Hold **[ Set ]** button on motor about 5s;
- 3、Within 10s after motor stops, press **[ Down ]** button about 5s;



- 4、 Within 10s after motor stops, press **【 Stop 】** button about 5s:

- ① Set the third limit between up and down limit, as the half position of blinds;
- ② Reset up and down limit, or repeat third limit setting steps will eliminate the third limit;
- ③ Press & Hold [stop] button about 3s;