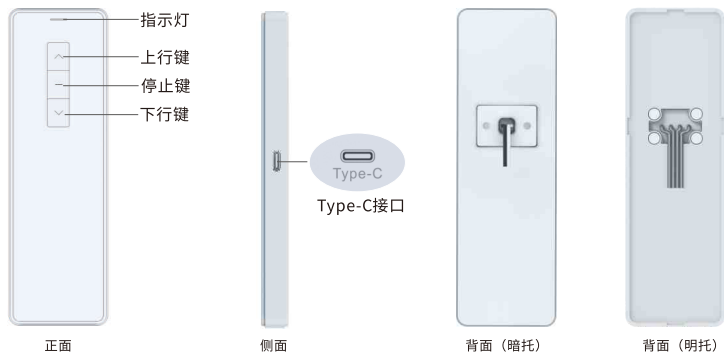


# A16锂电池接收器说明书

公司保留更改产品设计与说明书的权利，届时将不另行通知，图片仅供参考，具体以实物为准。 A/1 H12162

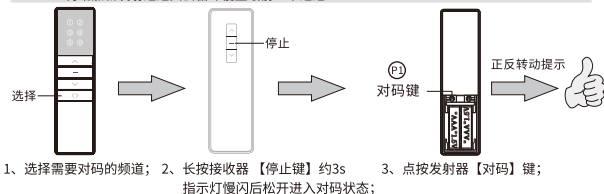
## 产品简介



1. 输入: DC5V 1A
2. 输出: DC12V 1A
3. 电池规格: 2600mAh 3.7V
4. 充电时绿色指示灯常亮, 充满电指示灯熄灭
5. 电量检测: 电量正常亮蓝灯, 低电压亮红灯, 电机处于停机状态

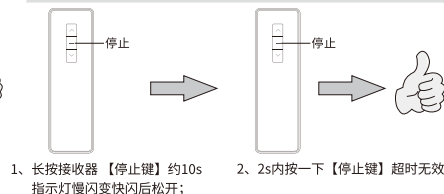
## 操作说明

**对码:** 重复操作对码步骤即是消除当前码。一台电机最多储存5个发射通道, 再增加新发射通道只会循环覆盖前一个通道:



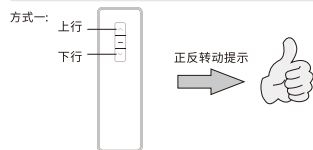
- 1、选择需要对码的频率;
- 2、长按接收器【停止键】约3s 指示灯慢闪后松开进入对码状态;
- 3、点按发射器【对码】键;

**自锁功能:** 锁住控制面板上、下键和遥控操作, 重复操作是解锁

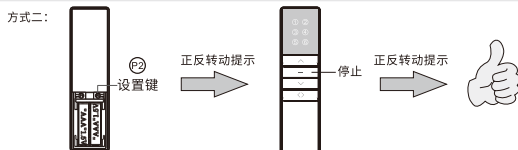


- 1、长按接收器【停止键】约10s 指示灯慢闪变快闪后松开;
- 2、2s内按一下【停止键】超时无效

**换向:** 换向前, 按上行键, 窗帘往下运行; 换向后, 按上行键, 窗帘往上运行:



- 1、同时按住接收器【上行键】+【下行键】;

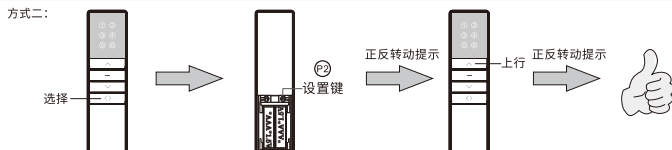


- 1、长按发射器【P2键】
- 2、长按发射器【停止键】

**点动/连动模式互换:** 电机出厂默认为连动模式, 切换为点动模式后, 长按住【上行键】或【下行键】约2s, 电机会计一直连动运转:

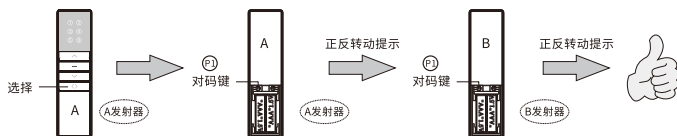


- 1、同时按住接收器【上行键】+【停止键】;



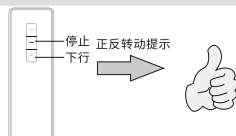
- 1、选择需要切换的频率;
- 2、长按发射器【P2键】
- 3、电机停止后10s内长按发射器【上行键】

**复制:** 为已经对码的电机新增一个发射器:



- 1、选择需要复制的频率;
- 2、长按发射器【对码】键;
- 3、电机停止后10s内按B发射器【对码】键

**消码:** 清除电机上所有接收存储发射器的记忆, 其它设置不会改变或清除:



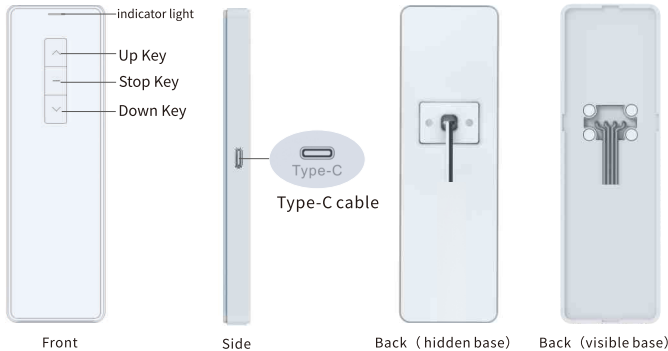
- 1、同时按住接收器【停止键】+【下行键】;

# A16 Lithium Battery receiver transmitter specification

Company reserves the right to change product design and specifications without prior notice then ,photos are for reference only.

A/1 H12162

## Features



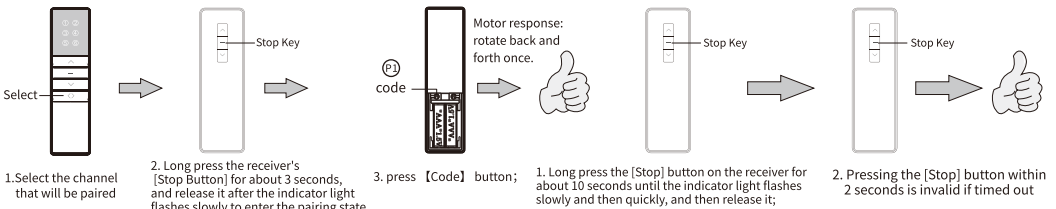
- 1.Input: DC5V 1A
- 2.Output: DC12V 1A
- 3.Battery Specification: 2600mAh 3.7V
- 4.The green indicator light stays on during charging, and turns off when fully charged
5. Power detection: The blue light is on when the power is normal, the red light is on when the voltage is low, and the motor is in a stopped state

### Pairing transmitter and motor:

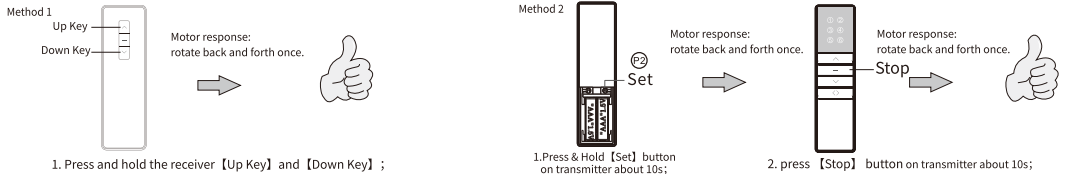
Repeat the pairing operation once to eliminate the current pairing. A motor stores up to 5 transmitter channels. Adding a new transmitter channel will cover the earliest channel. For example, current paired channels are 1-5. If you add channel 6, paired channels will be 2-6.

### Self-locking function:

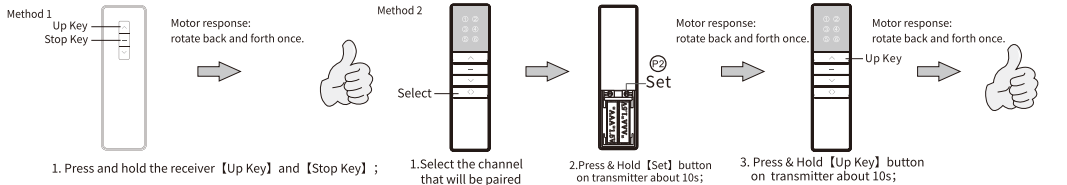
Locks the up and down buttons on the control panel and remote control operations. Repeated operations unlock



**Reset direction:** Reset motor direction. Such as: before reset, press transmitter up button, blinds run down. After reset, press transmitter up button, blinds run up.



**Inching / Continuous moving interchange:** Default is continuous moving. After switching to inching moving, press & hold [Up] or [Down] button about 2s, motor will continuously moves:



**Copy:** Add a new channel to control motor. (No need to touch motor):

**Clear pairing:** Clear all pairing on the motor:

